

P
O
R
T
F
O
L
I
O

M
A
R
I
E

D
R
O
M
A
I
N



CONTACT

mariezoedromain@gmail.com

+33681427191

18 chemin des hermières, 69340 , Francheville, France

TABLE OF CONTENTS

VOLUNTEERING WORK

P. 5

HYBRIDIZED CAR PARK

P. 7

REINVENTED MOTEL

P. 11

COLLECTIVE HOUSING

P. 17

PERSONAL WORK

P. 21

VOLUNTEERING

SAMRAONG, CAMBODIA
AUGUST 2016

During my internship in the second year of architecture I had the opportunity to make a project of humanitarian construction with the association GreenLion. I participated in the development of a school center in Samraong in Cambodia and I gave evening classes in English to the children of the village.

With other volunteers from all over the world we built a rainwater collector that we connected to the school water system. We also made wooden classroom tables, rainwater harvesting systems around the trees, and we finally cleared a vacant lot to set the stage for expanding the school.





CAPE TOWN, SOUTH AFRICA AUGUST 2014 AND AUGUST 2015

For 1 month in August 2014 I volunteered in the association You2Africa in the township of Masiphumelele near the city of Cape Town in South Africa. We helped with first aid in a nursery, and gave English classes. Every Wednesday we also went out and do activities with children in a poor neighborhood and to try to mitigate racial prejudice that Apartheid had left behind.

I had the chance to return the following year to continue this social project. I was also asked to paint portraits of respected personalities in South Africa, such as Nelson Mandela, Mother Theresa, or Gandhi.



HYBRIDIZED

CAR PARK

ACADEMIC YEAR: 2ND YEAR, MARCH 2017,

PROFESSOR : M. BRICE CHAPON

SUBJECT : THINK A PROJECT OF PARKING LOT CROSSED
WITH AN ATTRACTIVE PROGRAM IN A SUBURBAN UNIVERSE.

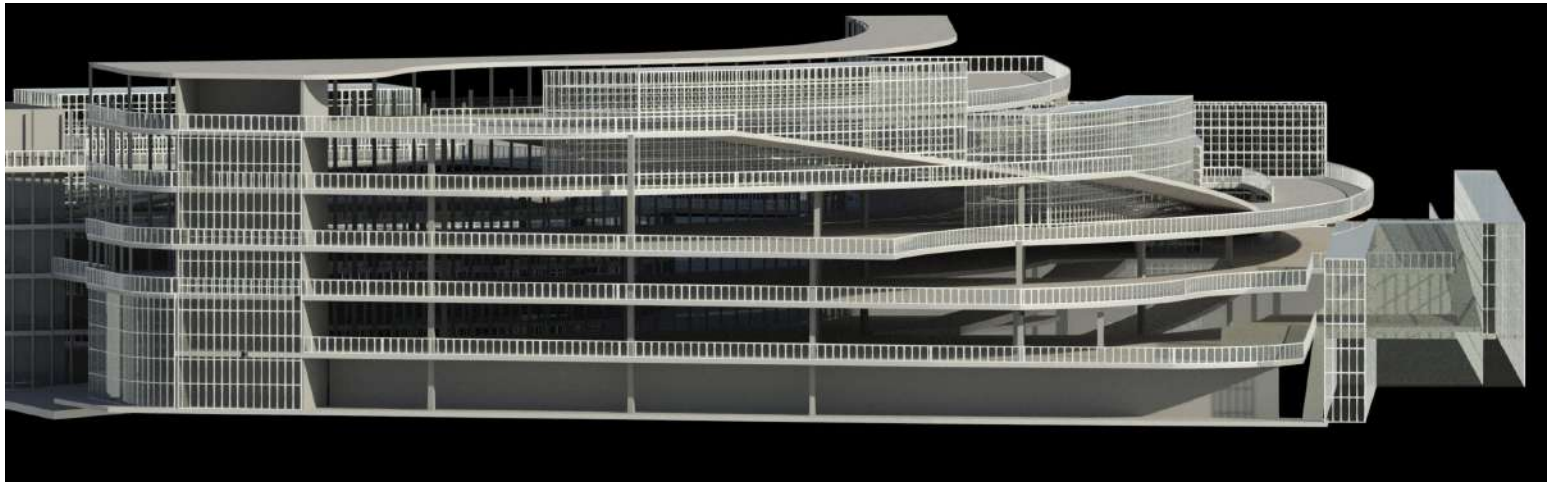
LOCATION : AVENUE OF THE PRESIDENT ALLENDE, VILLE-
JUIF, FRANCE

DURATION OF THE EXERCISE: 3 MONTHS

COWORKER : ZOE ZAOUÏ

SOFTWARE USED : REVIT, AUTOCAD PC, PHOTOSHOP,
SKETCHUP, ARTLANTIS, INDESIGN





The idea of this project was to associate with a parking lot of 500 places (buildings unattractive and often abandoned by the architects), an element of program completing it and revitalizing it. It was a question here of thinking the place of the car in the city. We decided to associate with this topical question another problem which seems to us undeniable today, that of the agricultural production. We made researches on the urban farming, the permaculture, the culture in greenhouse, we received the help of a brilliant student to the school AgroParisTec.

We also wished to respect the neighborhood, by not exceeding R+2 at the edge of the plot of land, and to stress the road crossing the plot of land that we protected by creating a fault reaching 15m of height in its maximum.

We thus find 4 020 m² of culture under greenhouse producing 40 kg /m²/an² of fruits and vegetables on average, that is 160,8 tons / year, being able to so feed 1 608 people a year. Every greenhouse is placed as central object of circulations and filter the light, creating a pleasant atmosphere.



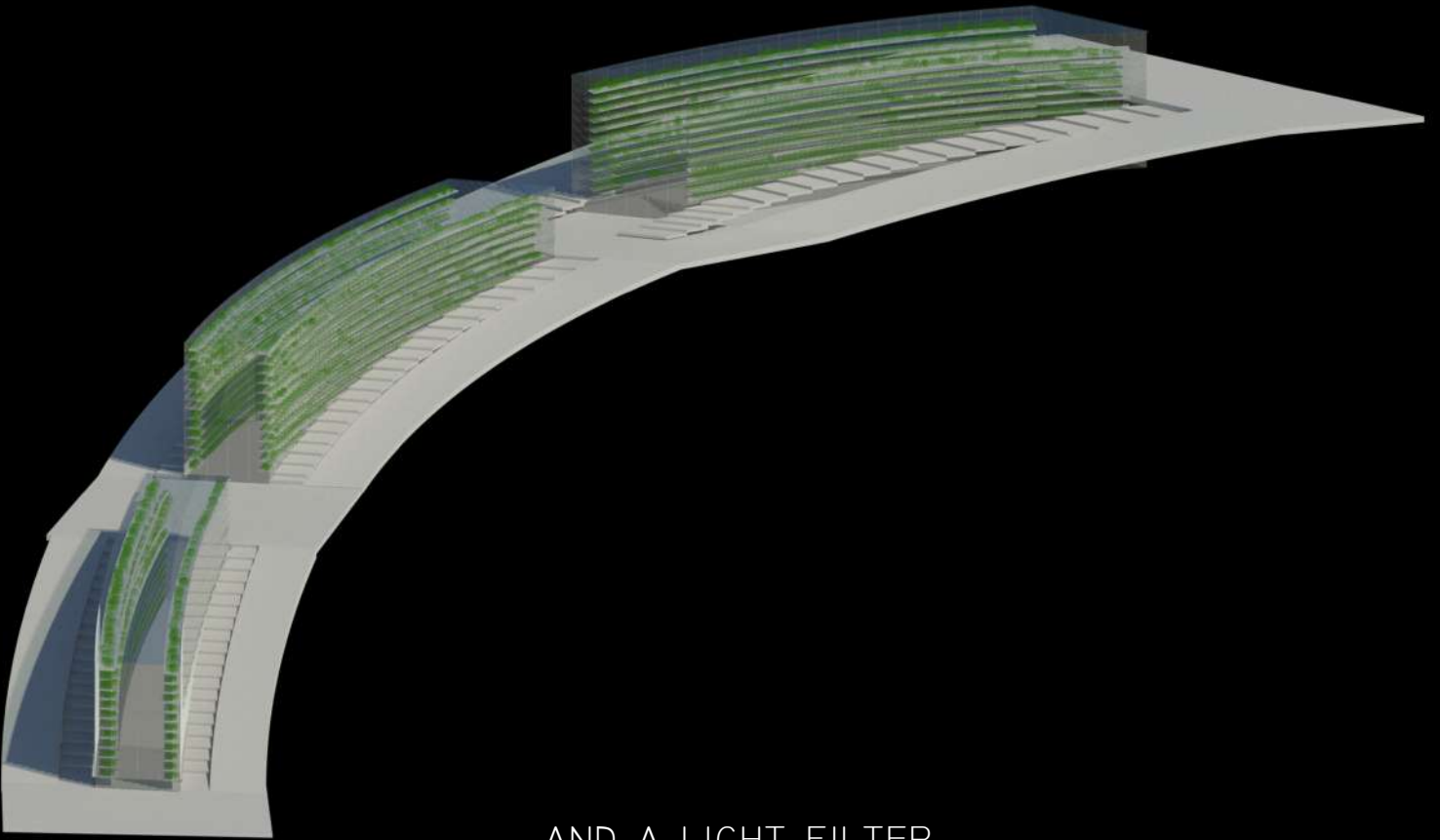
PLAYING WITH TOPOGRAPHY



HIGHLIGHTING THE CROSSING ROAD



THE GREENHOUSES AS AN CENTRAL OBJECT OF CIRCULATIONS...



... AND A LIGHT FILTER



REINVENTED

MOTEL

ACADEMIC YEAR: 2ND YEAR, JUNE 2017,

PROFESSOR : M. BRICE CHAPON, M. MIRCO TARDIO

SUBJECT : THINK ABOUT A CONTEMPORARY MOTEL OF 180
ROOMS IN SUBURBAN

LOCATION : LIEUSAIN SENART, FRANCE

DURATION OF THE EXERCISE: 2 MONTHS

SOFTWARE USED : REVIT, AUTOCAD PC, PHOTOSHOP, IN-
DESIGN

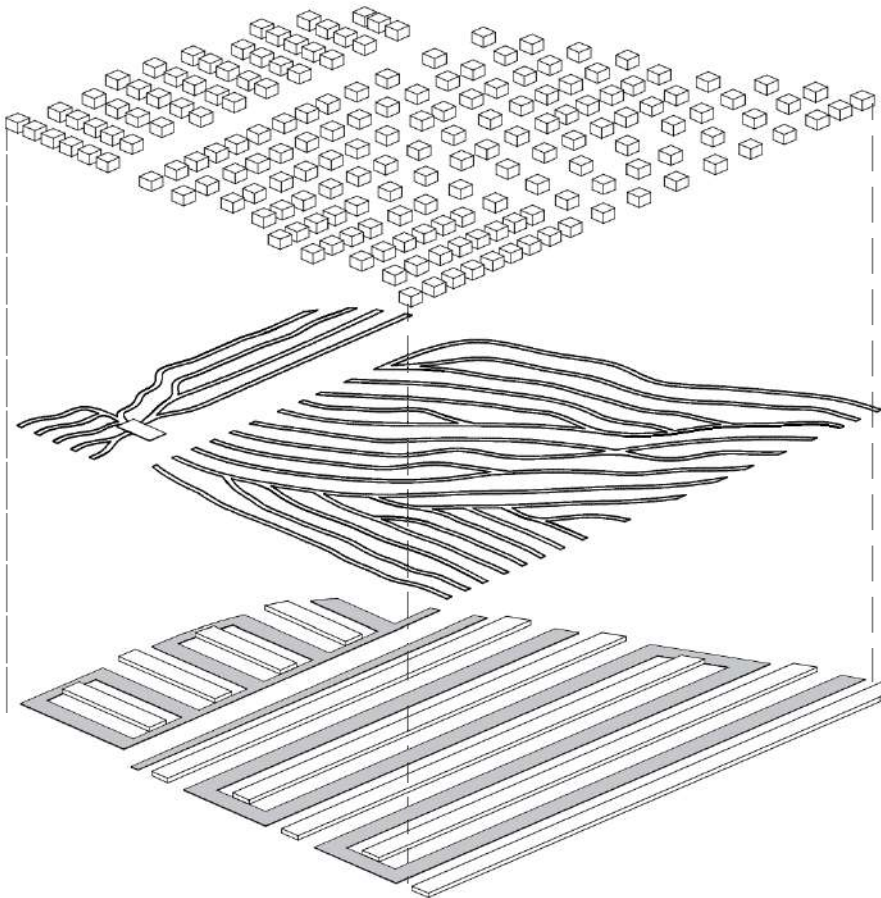


The question asked here is the one of the car and its impact in the environment, today and in the near future by imagining a modern motel of 180 rooms.

Three requirements are placed to develop this project : the car will be autonomous, clean and shared. It allows a duality between the automobile traffic and the pedestrian circulation.

As an almost robotics traffics, the car park appears as a line of car, given that they belong to nobody anymore, and unlike the soft paths, which were chosen as an in-between, between the straight boulevard and the small sinuous lanes.

Moreover, all these paths lead gently to the panoramic restaurant, as a point of view on the landscape of the city and the nature.



AUTONOMOUS
A CAR WITHOUT DRIVER



CLEAN
IN A PLACE WHERE THE MAIN NUISANCES
ARE THE NOISES AND THE POLLUTION

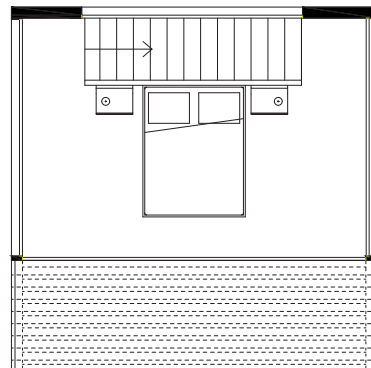
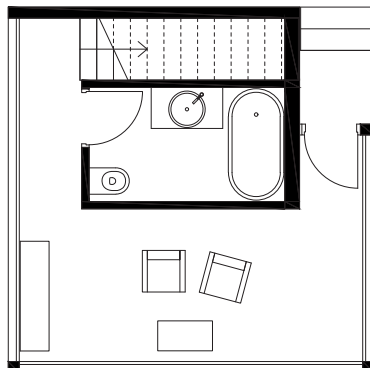
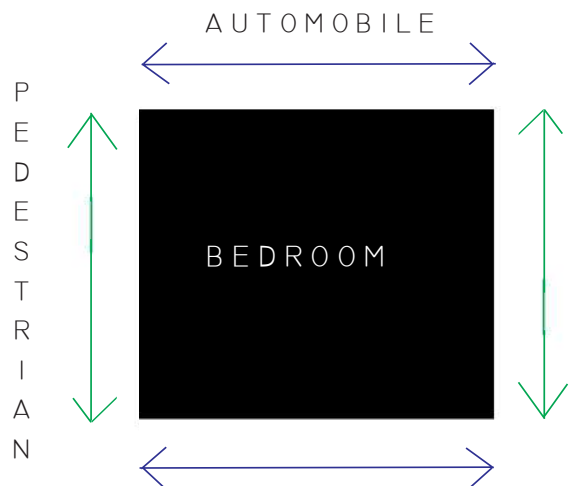


SHARED
THE END OF THE INDIVIDUAL CAR





MODEL MADE WITH REAL CONCRETE AND MOLD

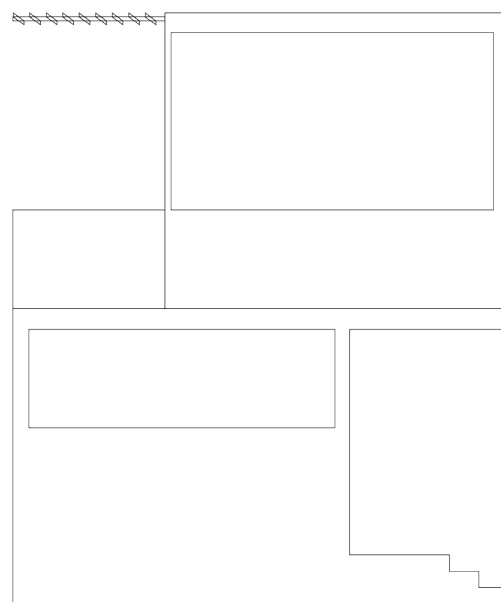
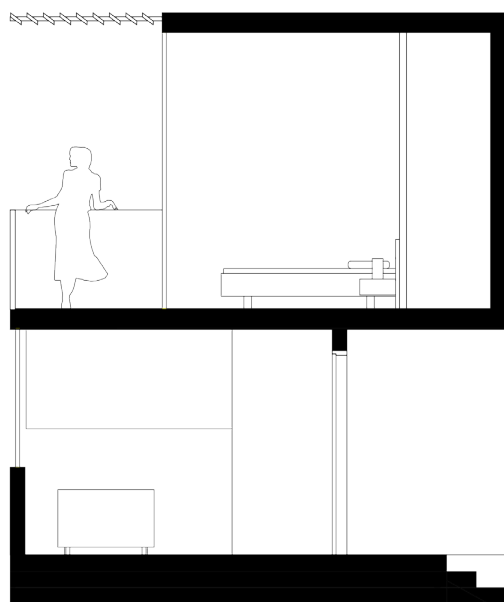
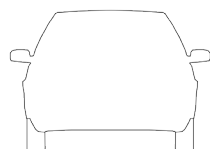


THE BEDROOMS

The bedroom is designed as a small individual house where the question of the sun is handled. The pergola on the south facade allows to leave the room shaded even on June 21st. Windows giving onto the automobile ways are placed at 1m50 of the outside ground not

to see cars, whereas the ones giving onto the pedestrians are at 1m80 of the outside so that the passers-by cannot hamper the internal intimacy.

Finally trees are disposed around houses leaving the people being in the floor between the foliages.





COLLECTIVE

HOUSING

ACADEMIC YEAR: 2ND YEAR, DECEMBER 2016,

PROFESSOR : M. DOMINIQUE CORNAERT

SUBJECT : ACCOMMODATE 25 FAMILIES IN A SOCIAL AND
ENVIRONMENT-FRIENDLY BUILDING

LOCATION : 1 PASTEUR STREET, IVRY-SUR-SEINE, FRANCE

DURATION OF THE EXERCISE: 2 MONTHS

COWORKER : ROXANE TORLOTING

SOFTWARE USED : REVIT, AUTOCAD PC, PHOTOSHOP,
SKETCHUP, ARTLANTIS, INDESIGN





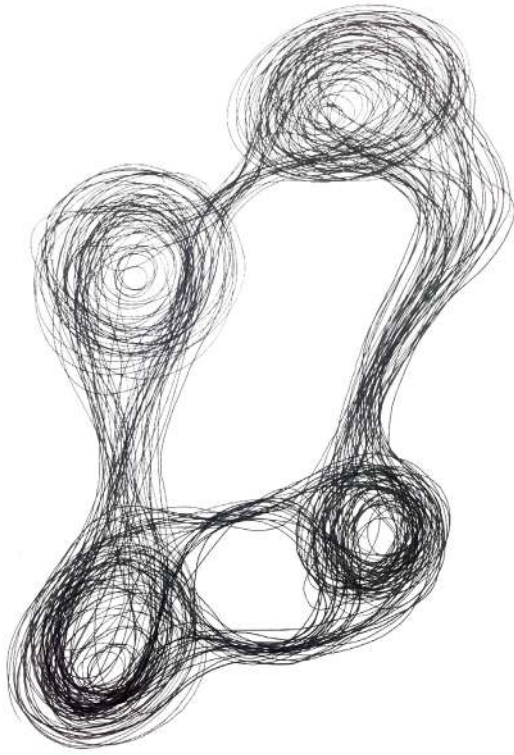
This project follows upon an exercise during which 23 pupils of the group imagined an housing for 23 "customers".

This whole accommodation was thus thought as a space of sharing and pooling while respecting at the most the individuality of each.

The plans of every apartment express the peculiarities of every customer and give a unique building. The program also contains spaces of exchanges as "

capable room " to take back the term of the architects Lacaton and Vassal, where are given French courses to refugees, projections of movie or exhibitions. We also find a collective kitchen garden, a henhouse, a common kitchen, and a space of coworking.

The project is in the form of an open island where the inhabitants and the passers-by can circulate freely or linger over small places.





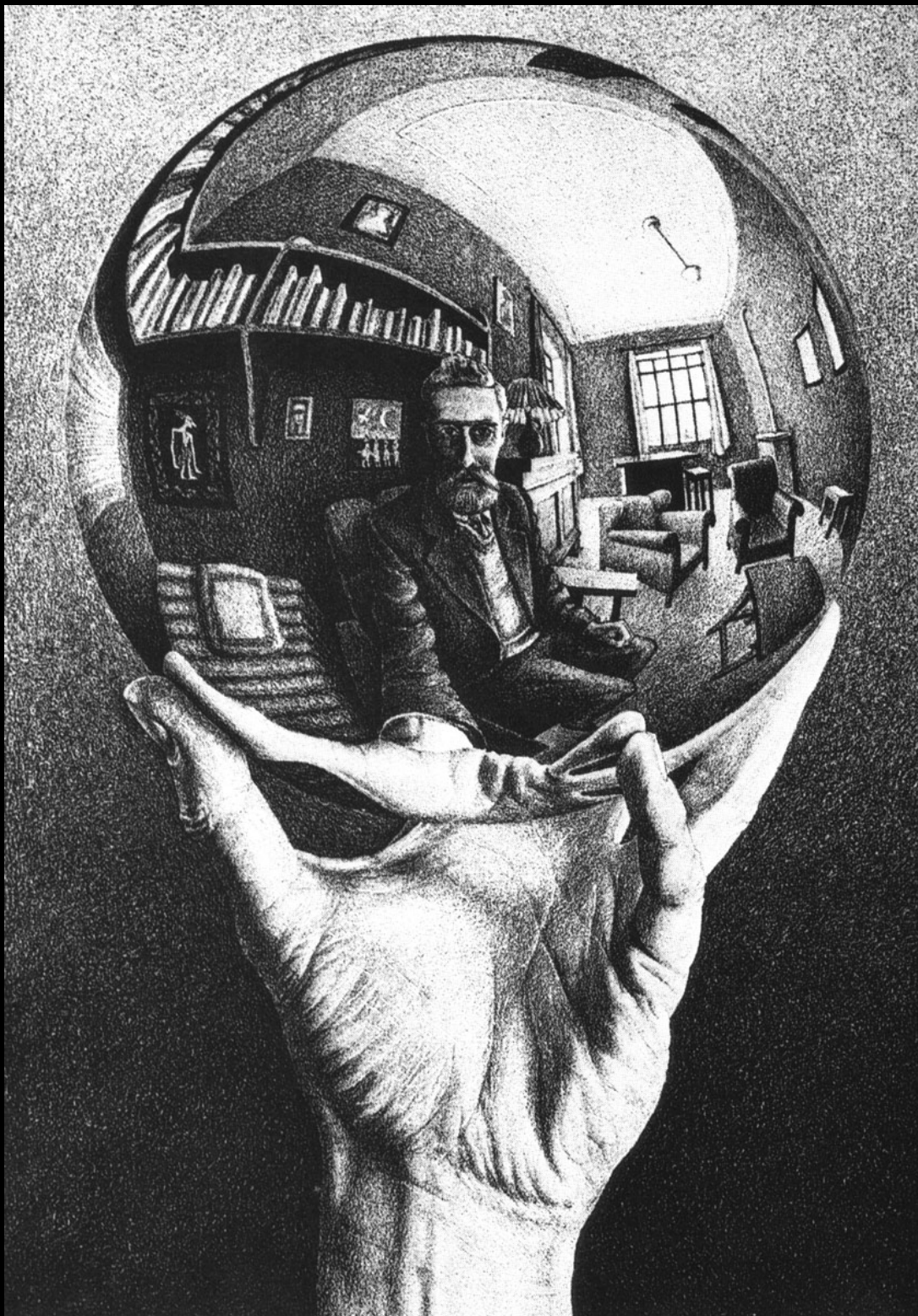
PERSONAL WORK



WHITE CHALK ON BLACK PAPER, 2013



WHITE CHALK ON BLACK PAPER, 2014



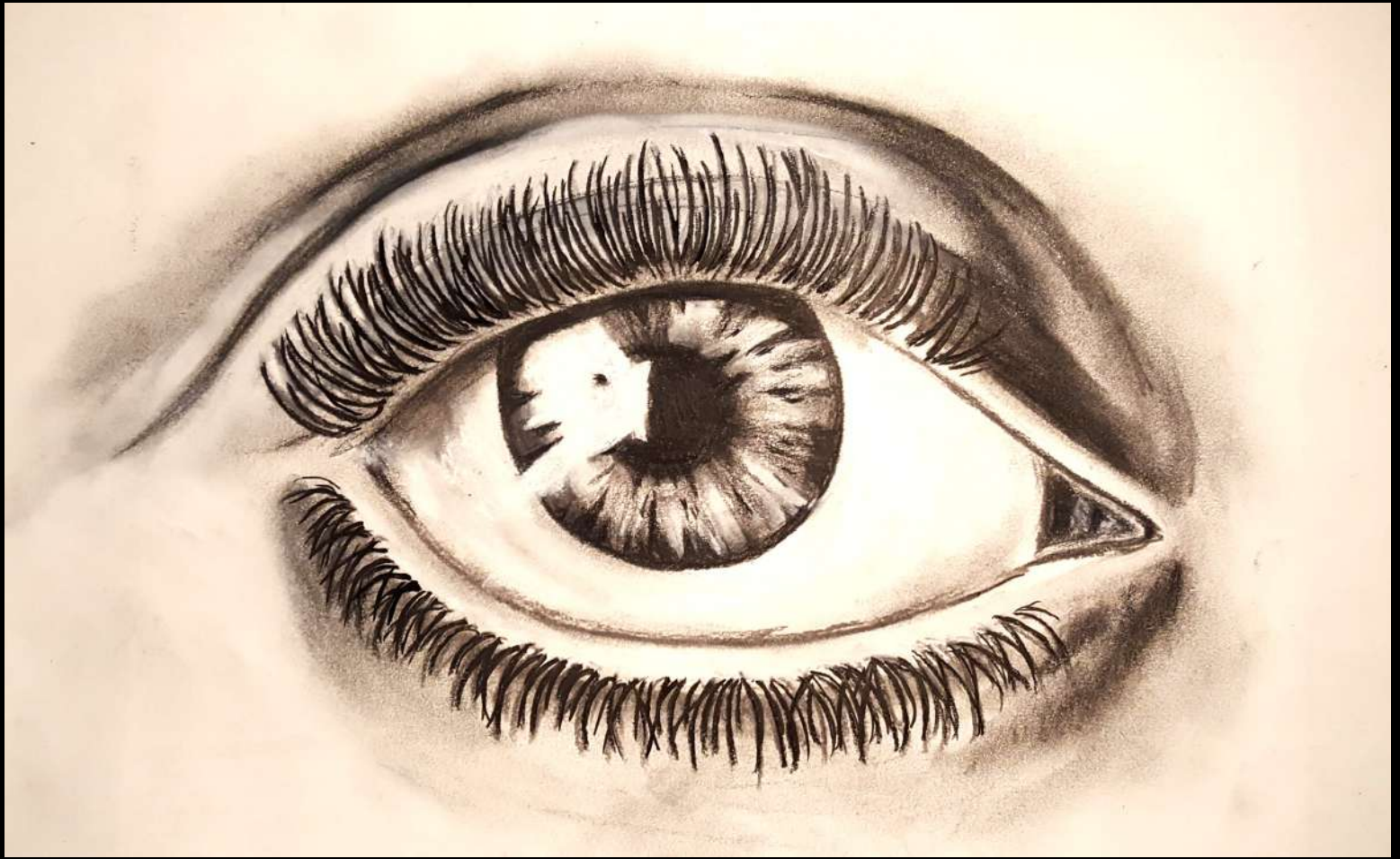
HAND WITH REFLECTING SPHERE, 1935, ESCHER



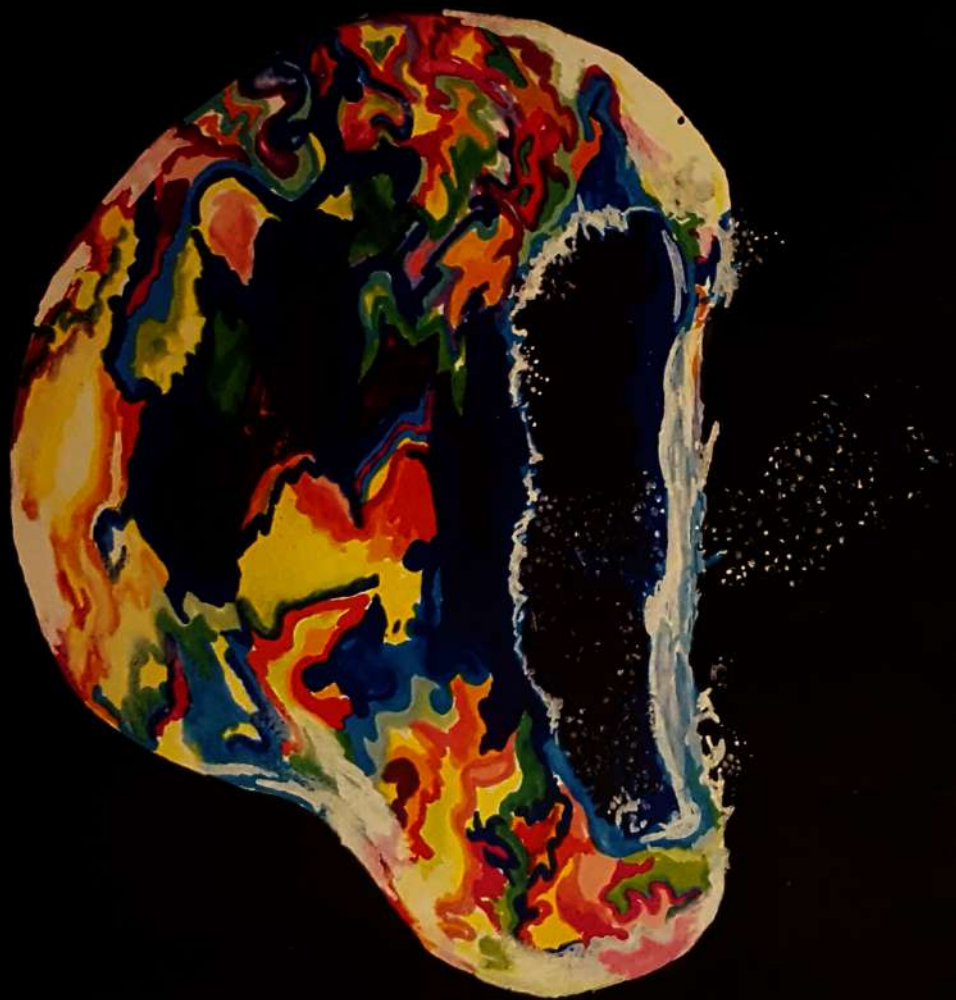
WORK WITH PHOTOGRAPHY AND CHARCOAL, 2014



WHITE CHALK ON BLACK PAPER, 2014



CHARCOAL, 2014



BUBBLE WITH PROMARKER, 2015