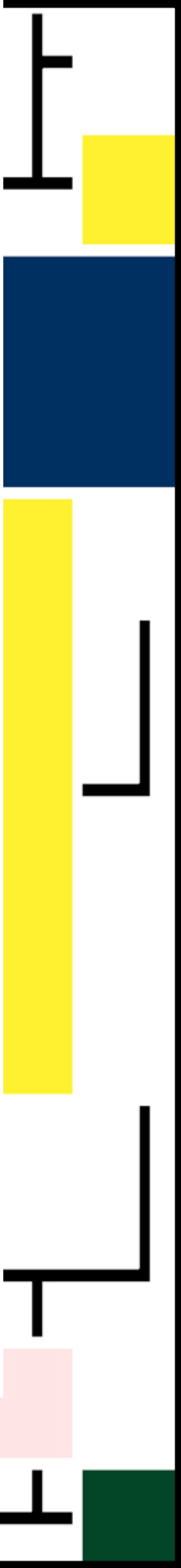


NAREDEEN MIKHAIEL



PORTFOLIO



02 MENOKIN

12 PAPERTY

22 6PIC

30 GIRLS
FOR
CHANGE

MENOKIN

Menokin is Francis Lightfoot Lee house and plantation that was built in 1769 known as Francis Lightfoot Lee House. This building is very rich with history, from the early on native American Rappahannock Indian Tribe who left around the area, to the owner of the house Francis Lightfoot Lee, a state politician and signatory of the Declaration of Independence. Menokin was declared a National Historic Landmark in 1971. After a long decay of the house, the Menokin Foundation was established in 1995 with a goal of recelebrate the building by restoring the house.

With all that history of the house it became very important to the foundation to acknowledge and stands for all the legacy of slavery is an open wound at Menokin. The Foundation reached Professor Camden Whitehead. He recruited a team of 12 interior design students from middle of broad, VCUarts' design and innovation lab, to draft potential interpretations of what is and what was slavery.



Location: 4037 Menokin Rd, Warsaw, VA

Size: 5,220 sq-ft

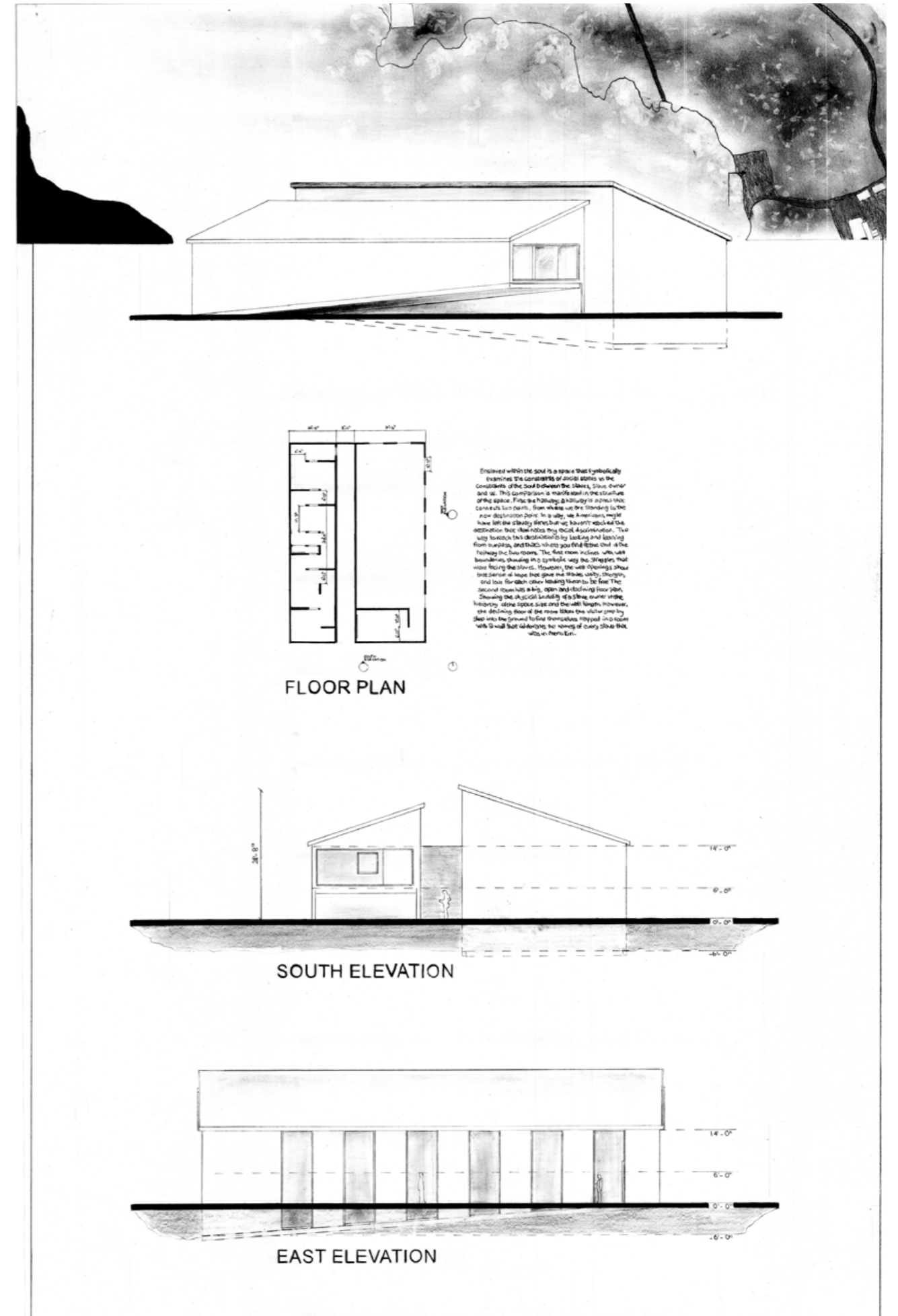
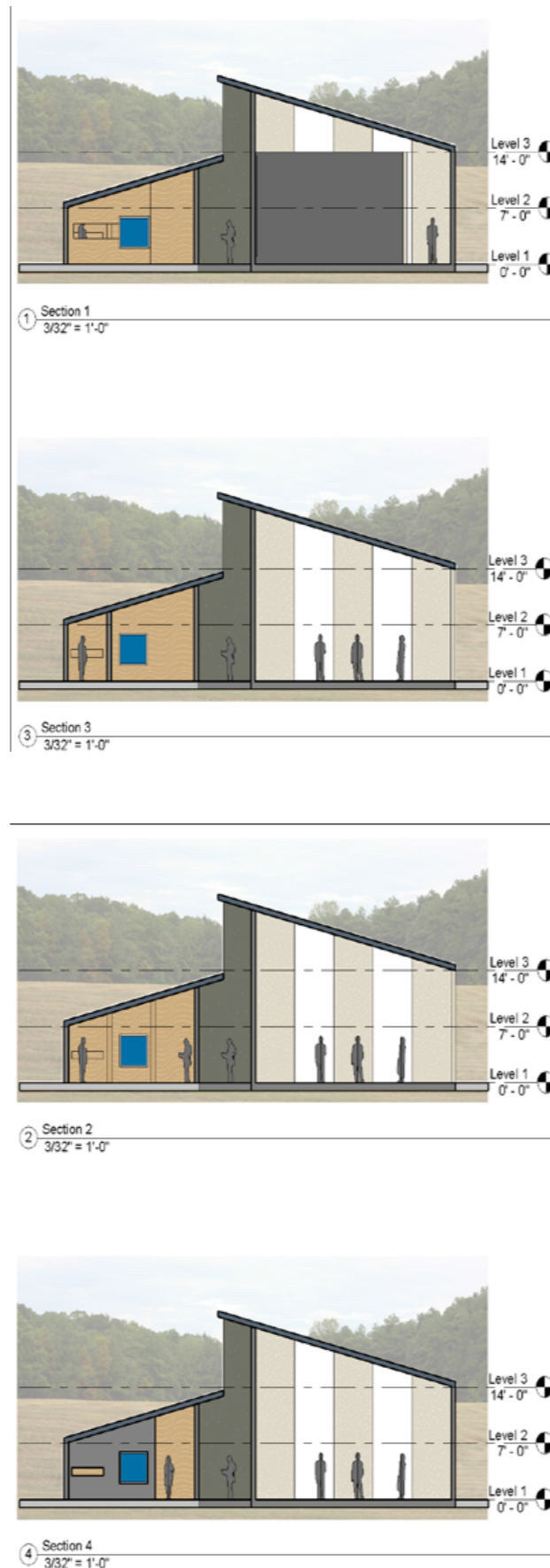
Year: 2017

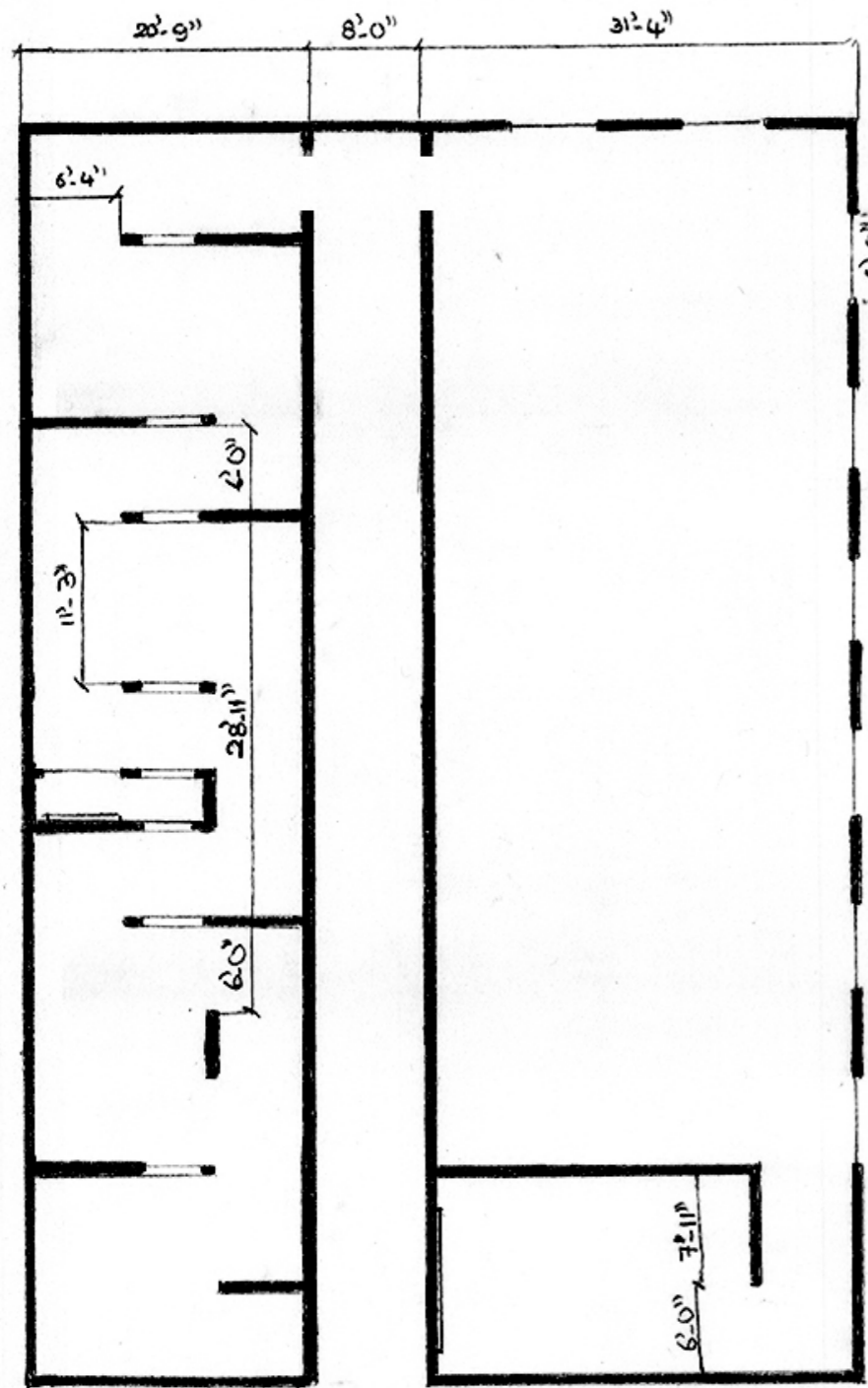
Project: Menokin [Camden Whitehead]

Enslaved within the soul is a space that symbolically examines the constraints of social status vs the constraints of the soul between the slaves, slave owner and us. This comparison is manifested in the structure of the space. First the hallway; a hallway is a pass that connects two points, from where we are standing to the new destination points. In a way, we Americans might have left the slavery times but we haven't reached the destination that illuminates any racial discrimination. The way to reach this destination is by looking and learning from our past, and that's where you find at the end of the hallway the two rooms. The first room inclines with wall boundaries showing in a symbolic way the struggles that we're facing the slaves. However, the wall openings show that sense of hope that gave the slaves unity, strength, and love for each other leading them to be free. The second room has a big, open and declining floor plan. Showing the physical brutality of a slave owner in the hierarchy of the space size and the wall length. However, the declining floor of the room takes the visitor step by step into the ground to find themselves trapped in a room with a wall that celebrates the names of every slave that was in menokin.

Featured in VCU arts Webpage:

<http://arts.vcu.edu/this-old-house-mob-proposes-slave-memorials-to-menokin/>

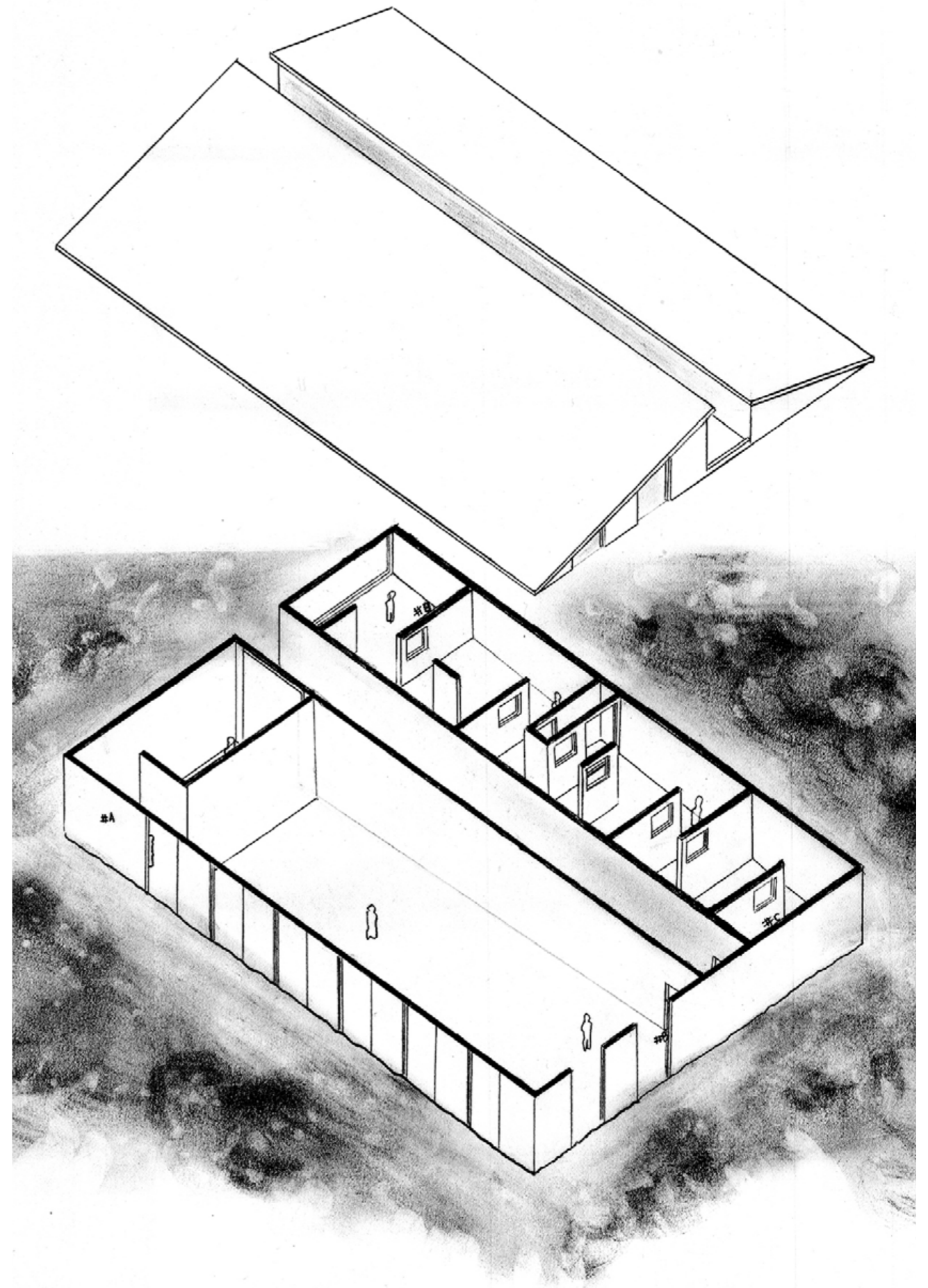




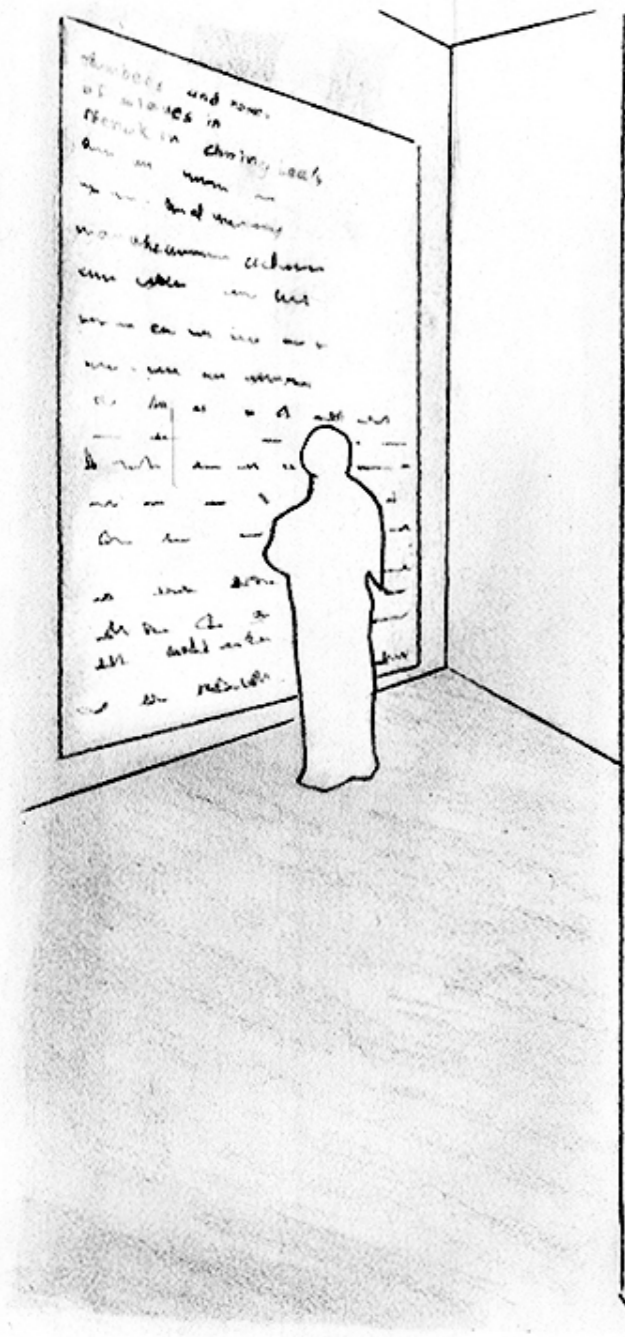
EAST
ELEVATION

SOUTH
ELEVATION

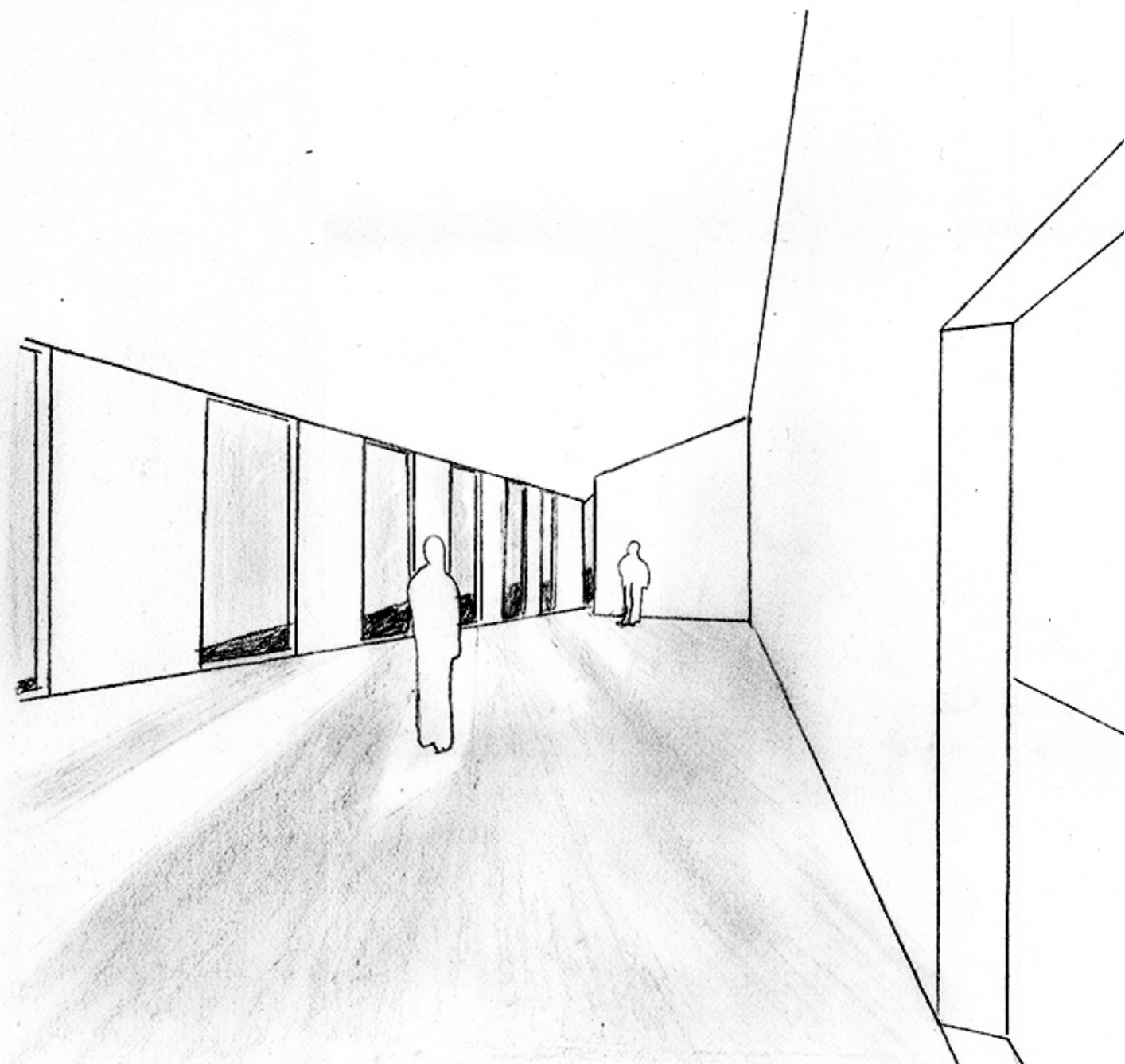
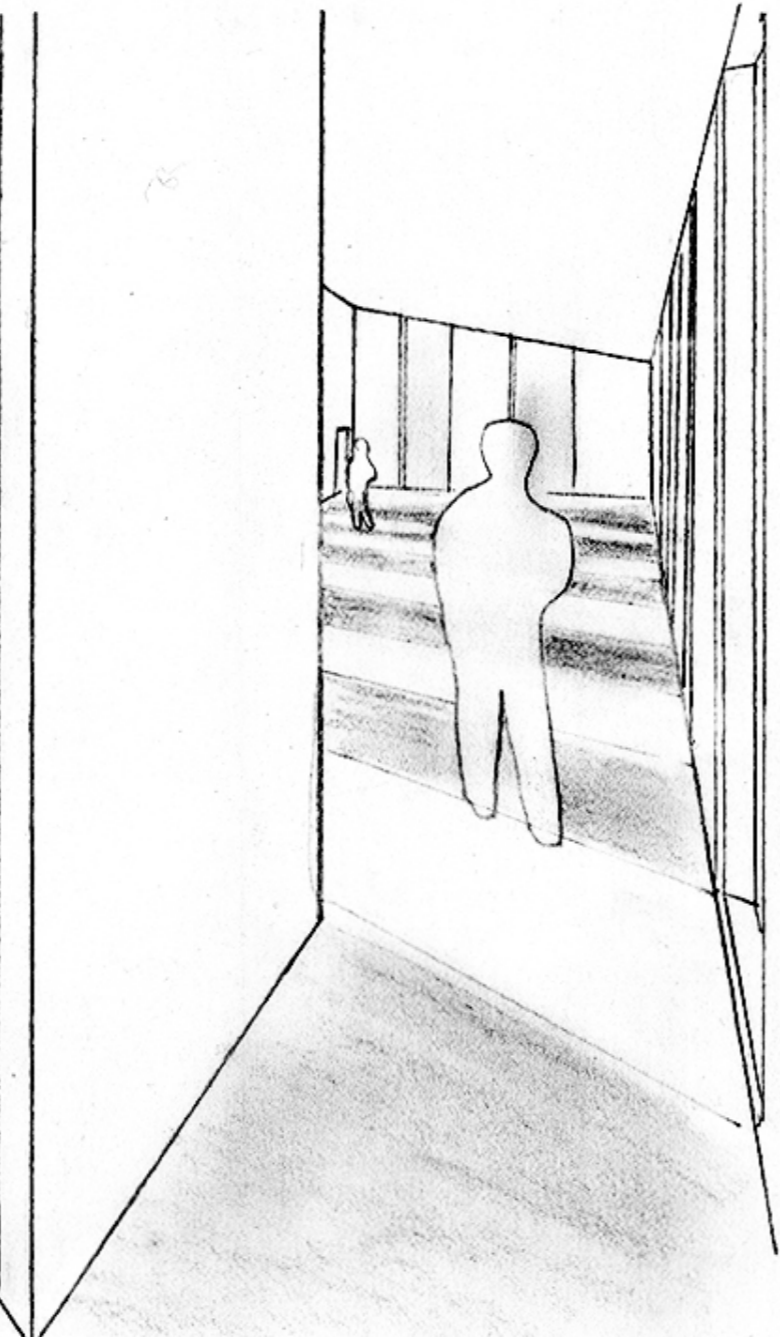
FLOOR PLAN



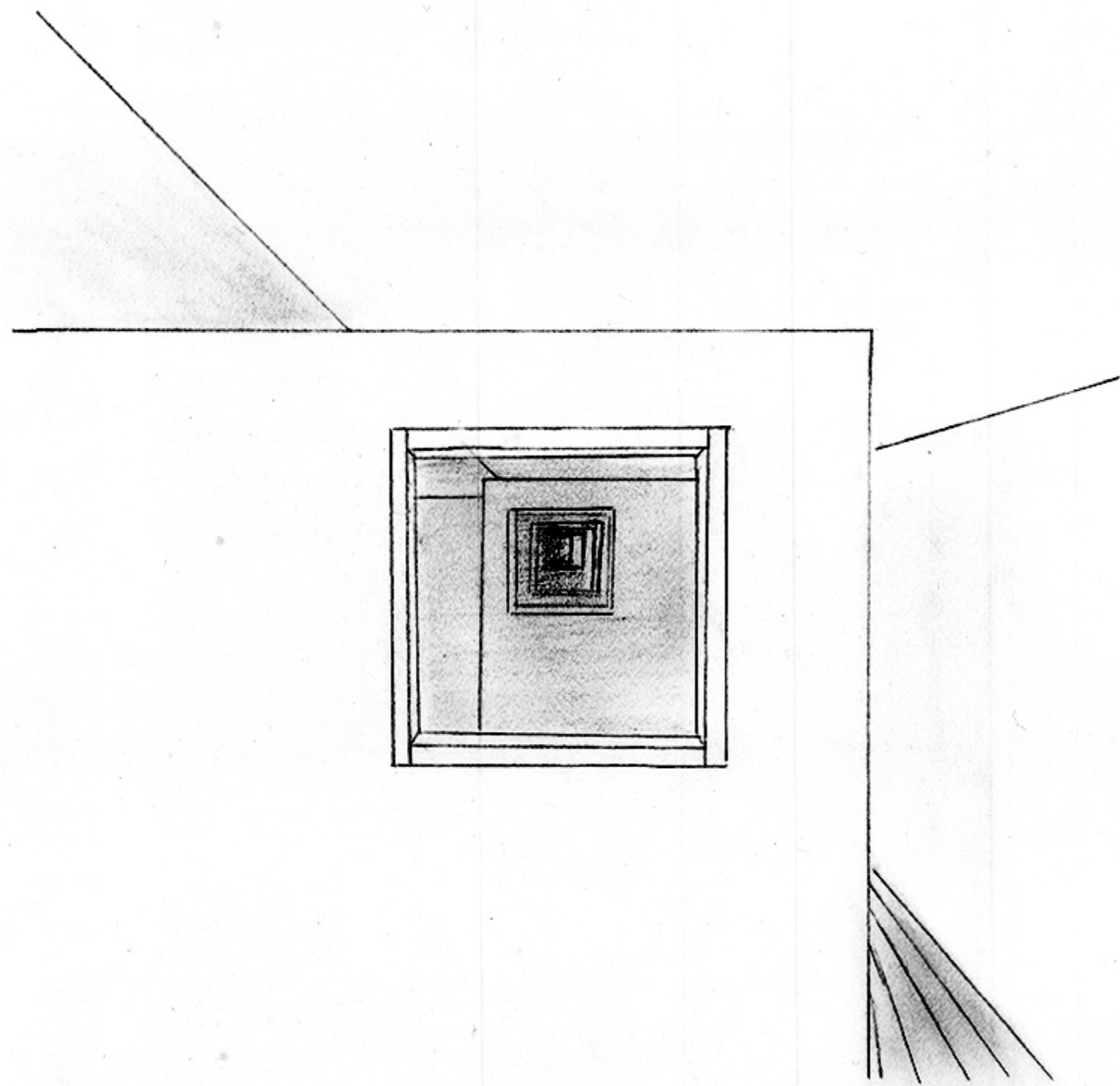
ISOMETRIC



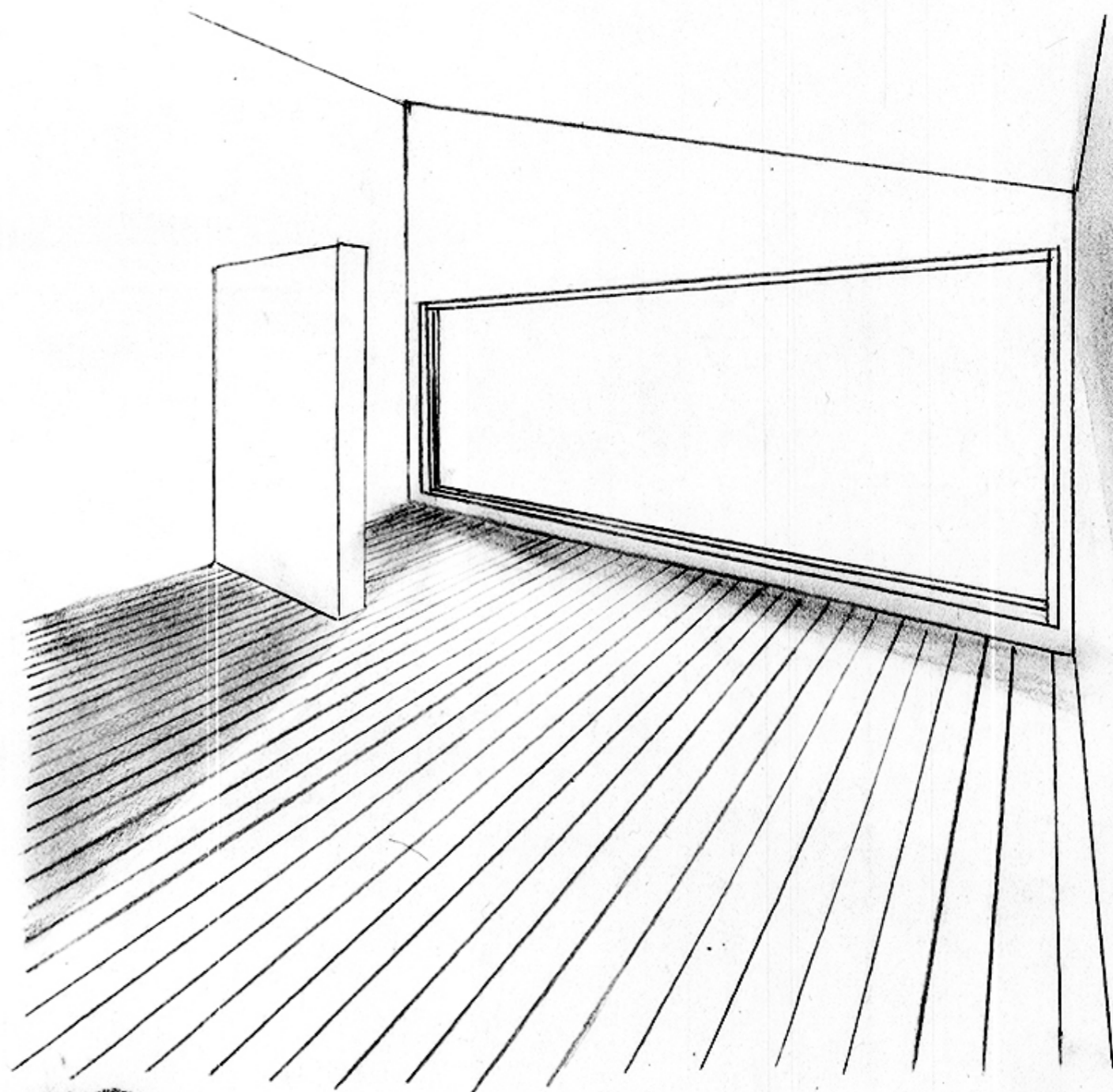
#A



#B



#C



#D

PAPERTY

Paperty is a unique paper store selling paper, paper masks, paper mech and more. This store offers paper technics and teaching classes that friends and family can come and enjoy.

Although digital media is gaining an increasingly important role in today's world, it can never replace the warm, tactile touch of a paper. After all, scrapbooks don't require startups or shutdowns. Magazines never crash. And while flash drives are a convenient way to store images, wearing one around your neck just doesn't have the same effect as your grandmother's antique locket. Computers may keep records — but paper leaves a legacy.



Location: 205 E Broad St, Richmond, VA

Size: 3,800 sq-ft

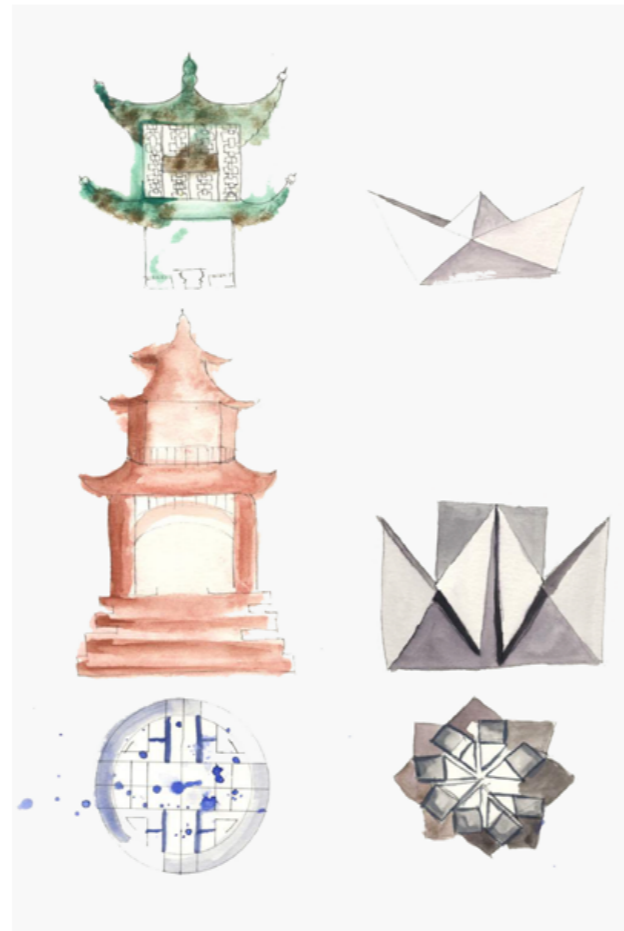
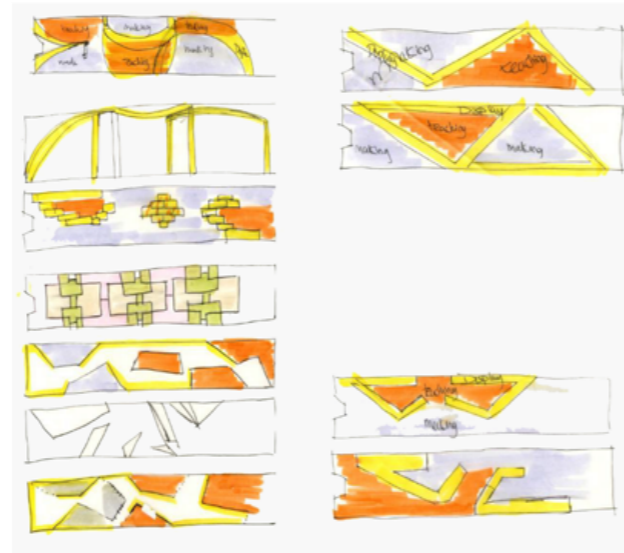
Year: 2016

Legacy and Delicacy

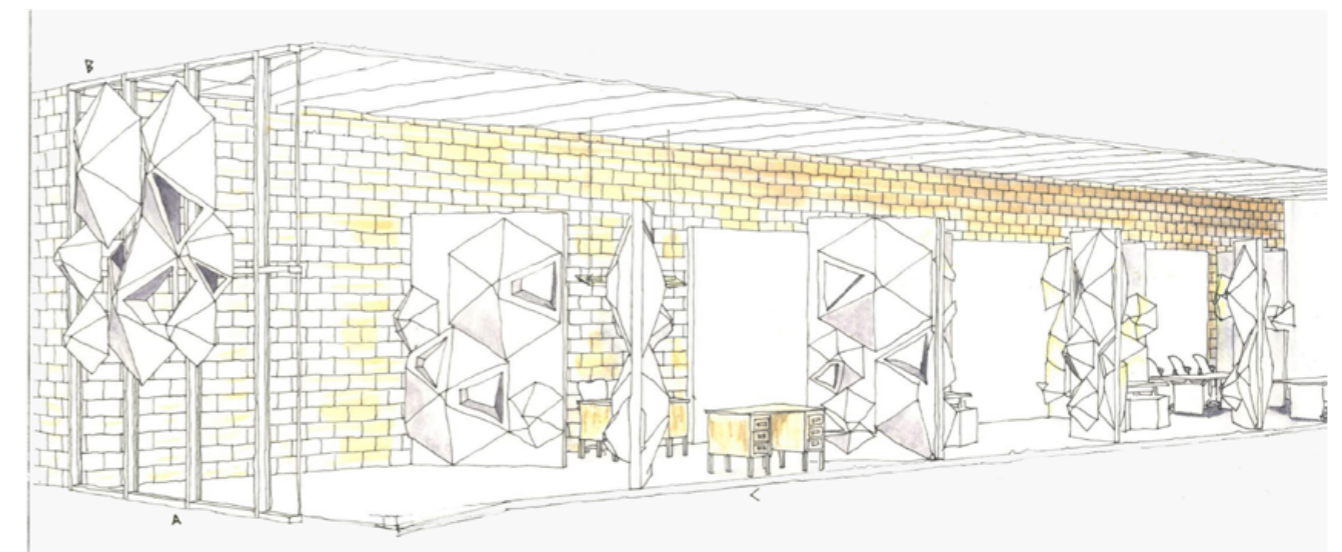
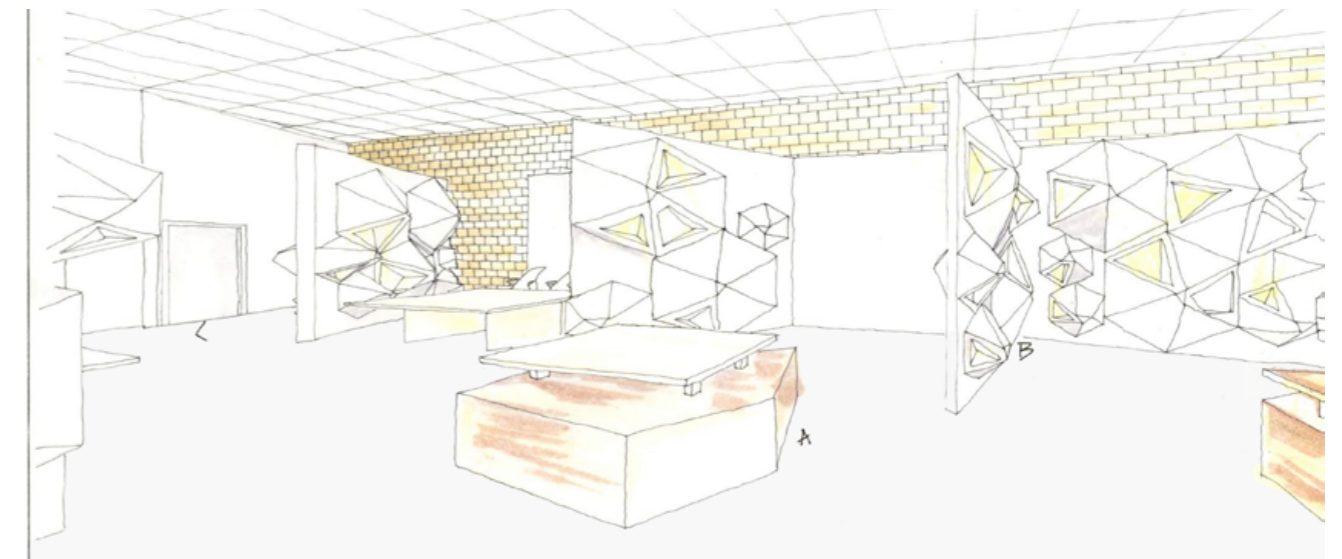
Legacy: Law. a gift of property, especially personal property, as money, by will; a bequest. Anything handed down from the past, as from an ancestor or predecessor

Delicacy: Fineness of texture, quality, etc.; Softness; daintiness. Something delightful or pleasing.

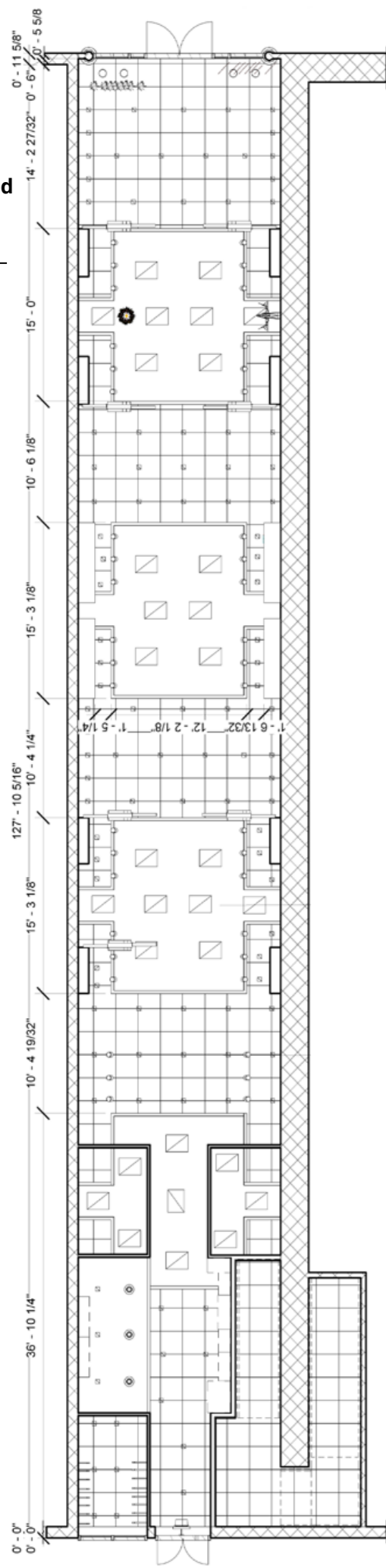
The uniquely crafted store is inspired by "Origami" in the aspect of the paper's legacy and its delicacy. By understanding of the history of the paper invention, the store further explores the eastern oriental design and how to simplify those designs to Origami forms. The language of ((Bending)) ((Cutting)) ((Gluing)) also provided the range between formal line and implied lines. This language begins to translate into the design of the store.



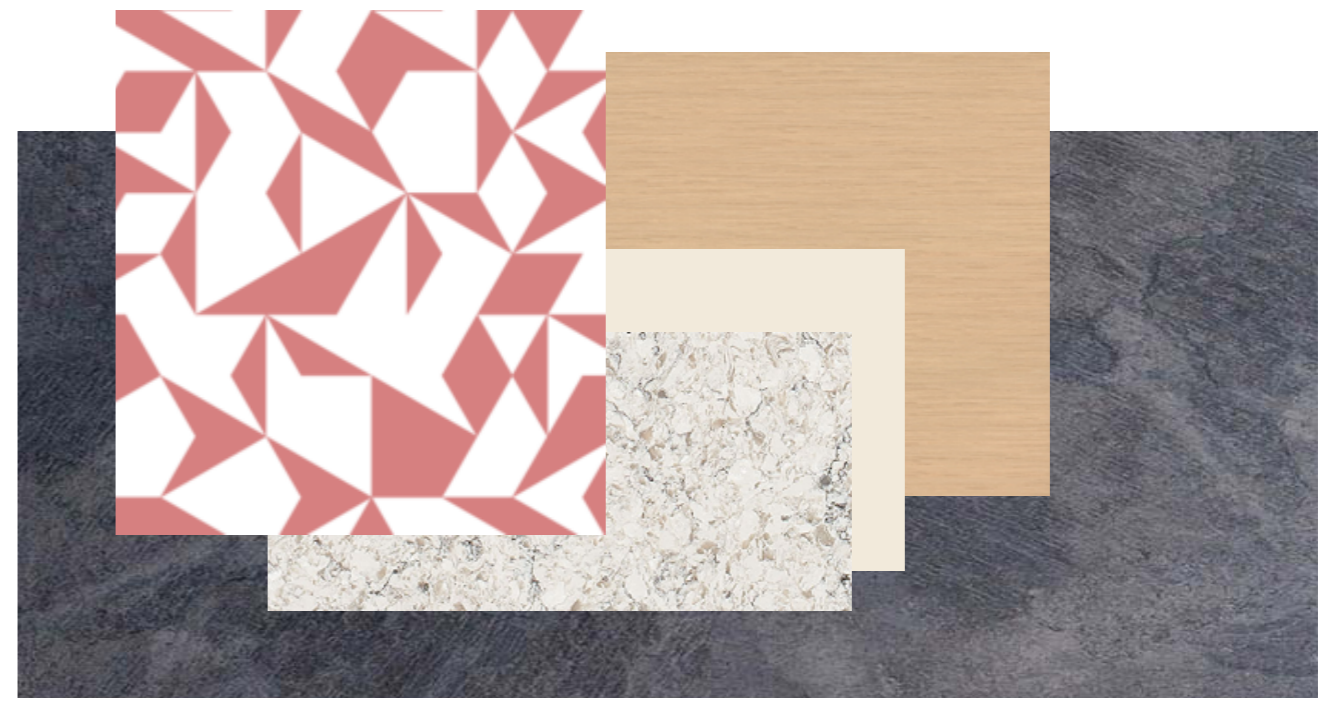
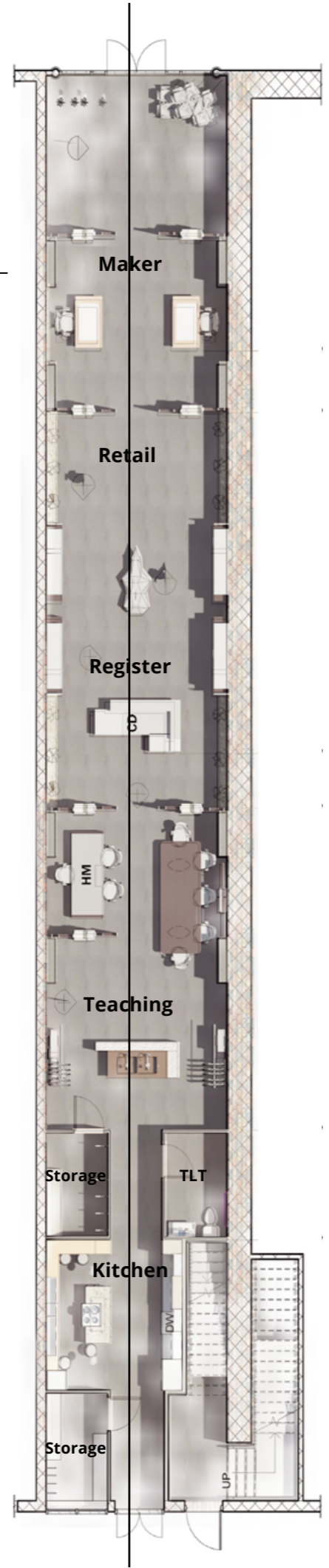
Process



Reflected Ceiling Plan



Floor Plan



Flooring: 205 E Broad St, Richmond, VA

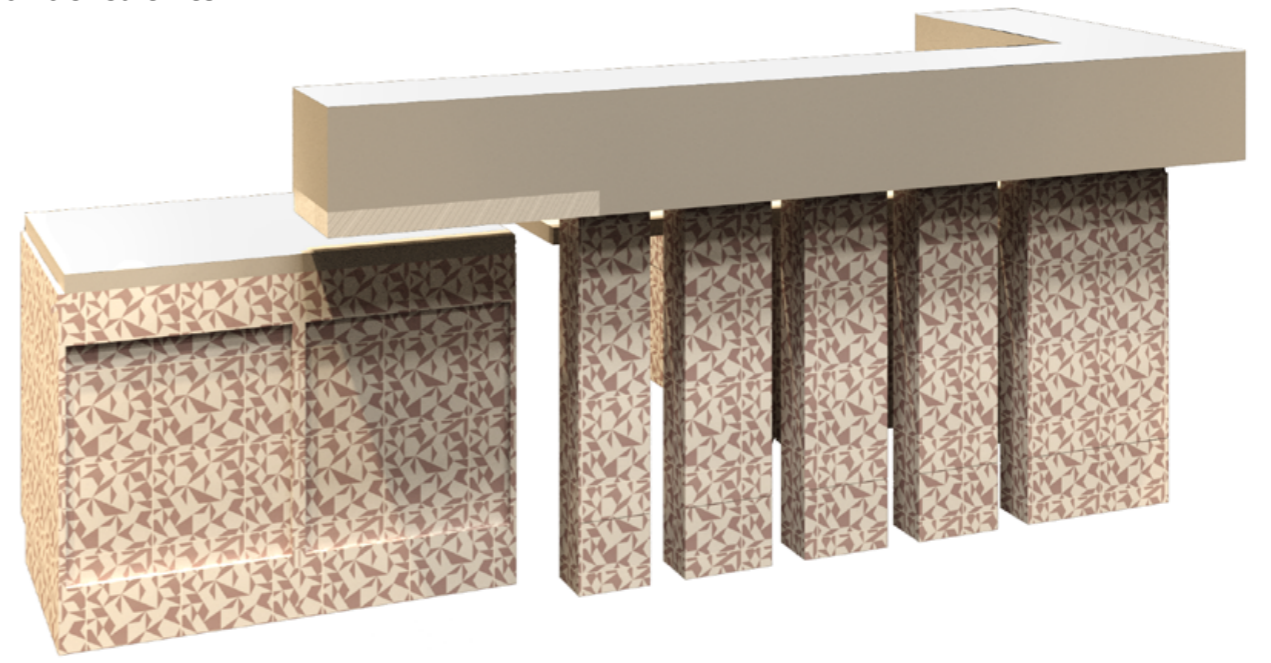
Lament: Wilsonart Blond Echo 7939

Solid Surface: Wilsonart Antique White 1572SL

Quartz: Wilsonart Santiago Q4023

Acrylic Panel: 3form Kite Color

Point Of Sale Desk







6PIC

The Six Points Innovation Center is a building in Highland Park that houses 3 non-profit organizations (Art180, GroundWork RVA, and Saving Our Youth) dedicated to youth-centered programming. Storefront for Community Design manages the space, planning events and art/design workshops in addition to the programming provided by the other organizations. Currently, the space is delineated chaotically with donated furniture into temporary, fluid zones. This project will put MOB “middle of broad studio” designers directly in contact with the Change makers, a youth council that grants 6PIC youth agency, leadership, and self-determination. 6PIC needs DIY, innovative and affordable solutions to help mitigate the spatial chaos.



Location: 3001 Meadowbridge Rd,
Richmond, VA

Size: 4,615 sq-ft

Year: 2017

Client: Six Points Innovation Center

Project team: Katherine Xie, Paris Eve

Reinhard, Naredeen Mikhael, Tonyee Ng

Team Leader: Naredeen Mikhael

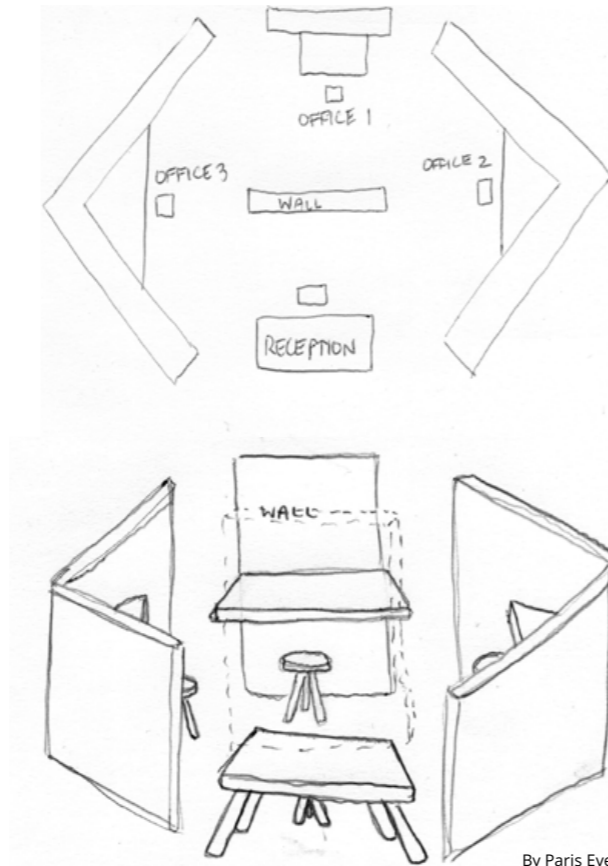
Concept

Using the concept of a City in a way of dividing the main programs creating three different options to our client "open....open/closed....closed"

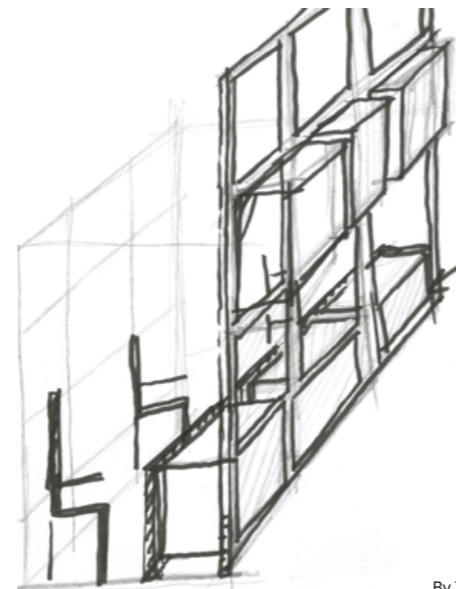
Reception ■
Community ■
Play ■
Study ■
Offices ■

In our city we thought about how to invite the community to move around the different programs that is happening in the space in a way to create awareness. The challenge was how create individual stations for every program that can be opened for collaboration yet maintaining the option of privacy.

A way to solve this problem was by creating a prototype modular partition that can host storage systems. Depending on where and how you stake the storage its would change the partition to be open or closed/ public or privet.

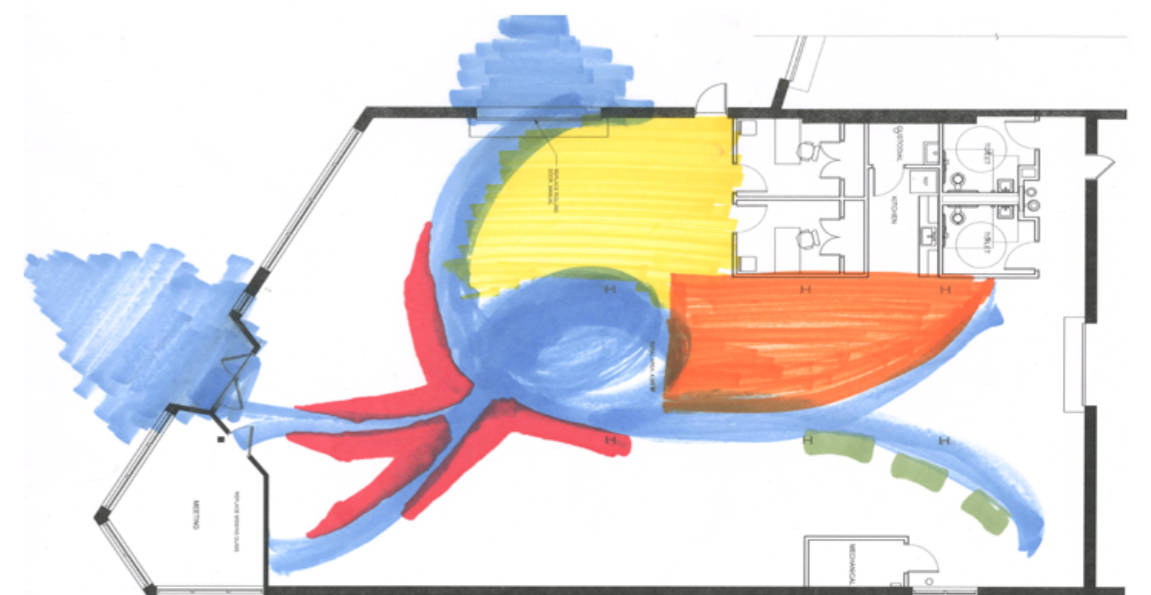
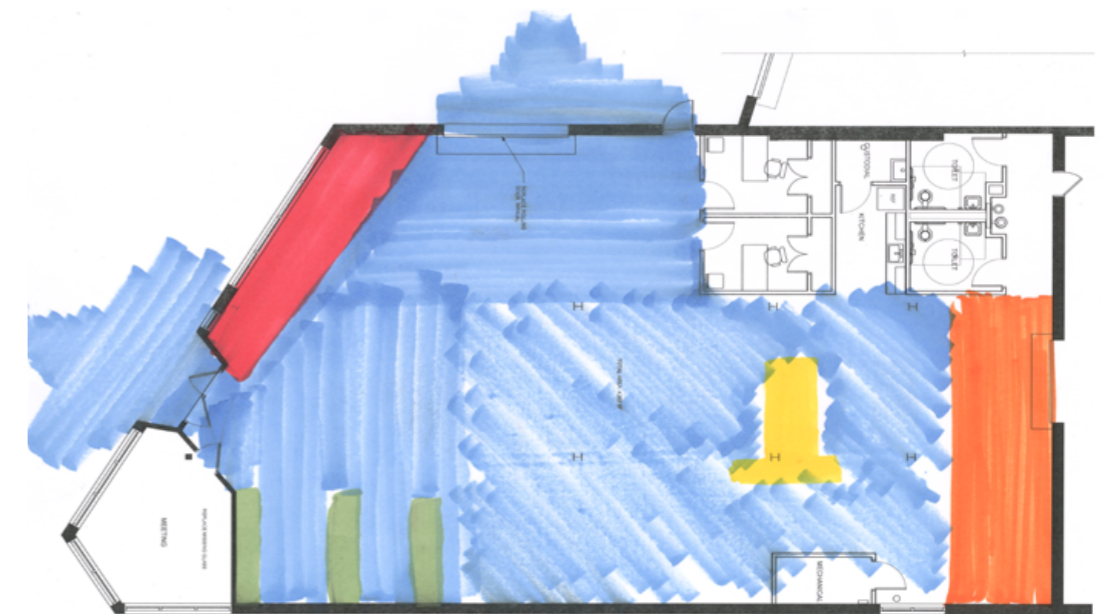
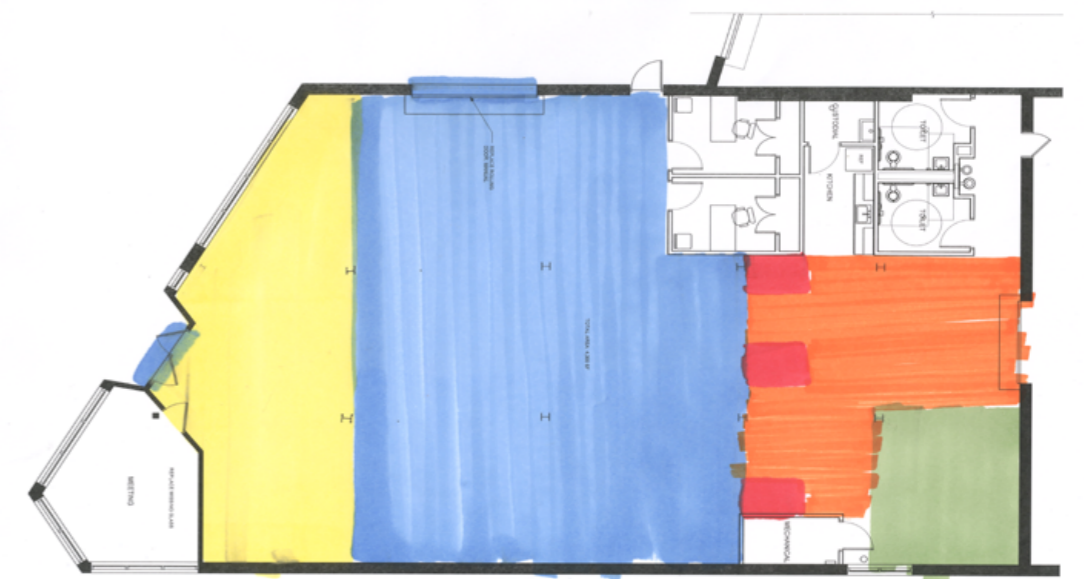


By Paris Eve



By Tonyee Ng

Parti Diagram





Option 1: Open / Movable

With a clear line of vision from the front of the room to the back, this floor plan was created thinking about avoiding walls to create a spacious, open area. The furniture in this space will be mostly movable, allowing for even more space to open up.



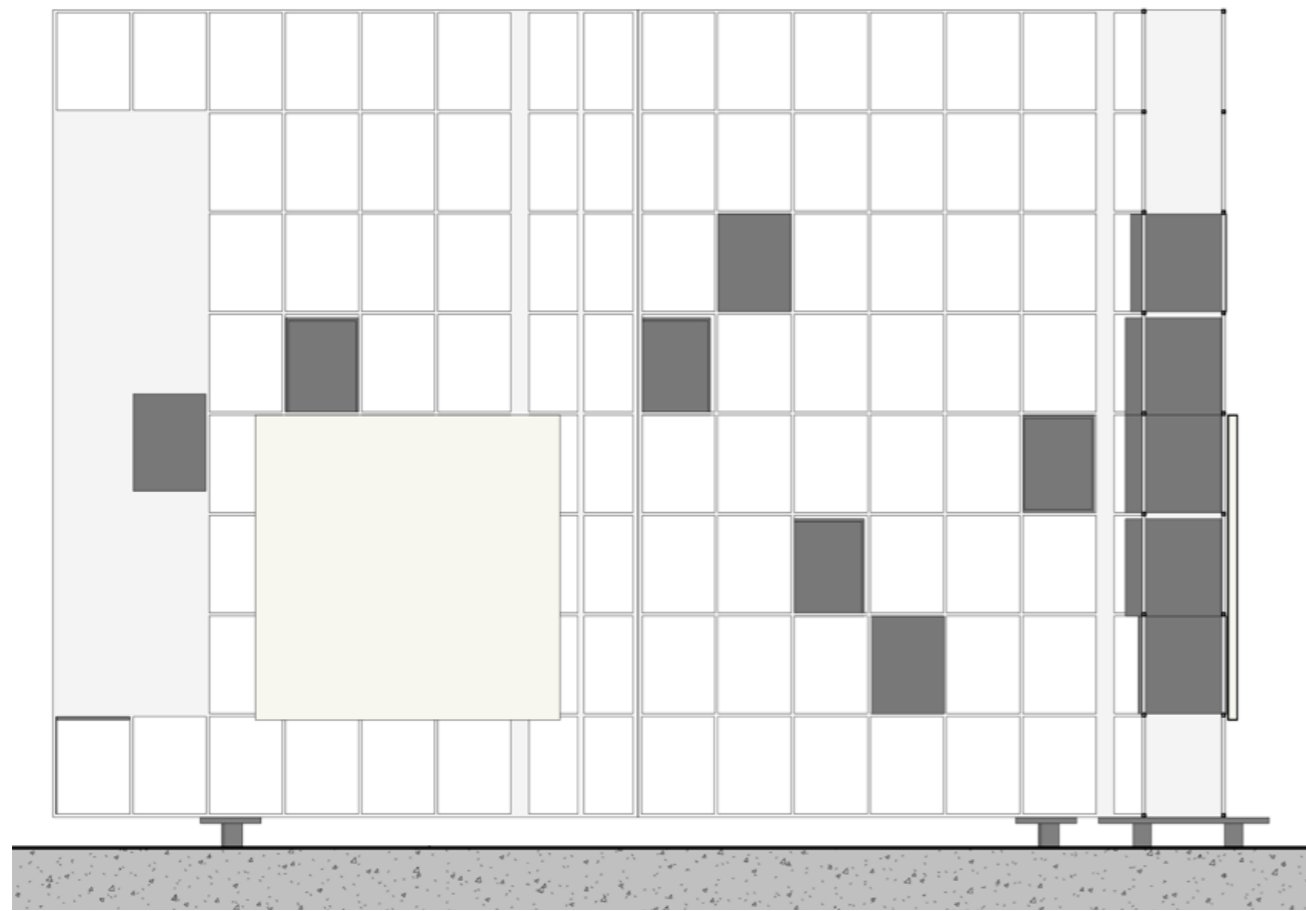
Option 2: Open / Closed

This space was created to be somewhere in between the closed floor plan and the open floor plan. Although there are no actual blockades, we created visibility barriers using partition walls.



Option 3: Closed / Fixed

This space was designed thinking about how walls could be created without using literal walls. Sections in this space would be relatively closed off and unchanging/ unmovable.



Partition Prototype



Main part for this project was organizing and selecting within the furniture that the place already had. These are some of the furniture that we choose, as most of them end up being a multipurpose pieces, working with the divider partitions. On the left is pictures for the divider partitions mock-up that we built to show the scale and the relation between the partitions and the furniture.



GIRLS FOR CHANGE

Girls for a change is non-profit organization and program that has the mission of supporting African American girls and other girls of color and inspire them to visualize their bright futures and potential through discovery, development and social change innovation in their communities.

This project goal was to renovate and create a new space for the organization. A space to provide areas of education, as well as play, and the culinary arts. As well as creating a sense of graphic identity and branding.



Location: 205 E Broad St, Richmond, VA

Size: 3,800 sq-ft

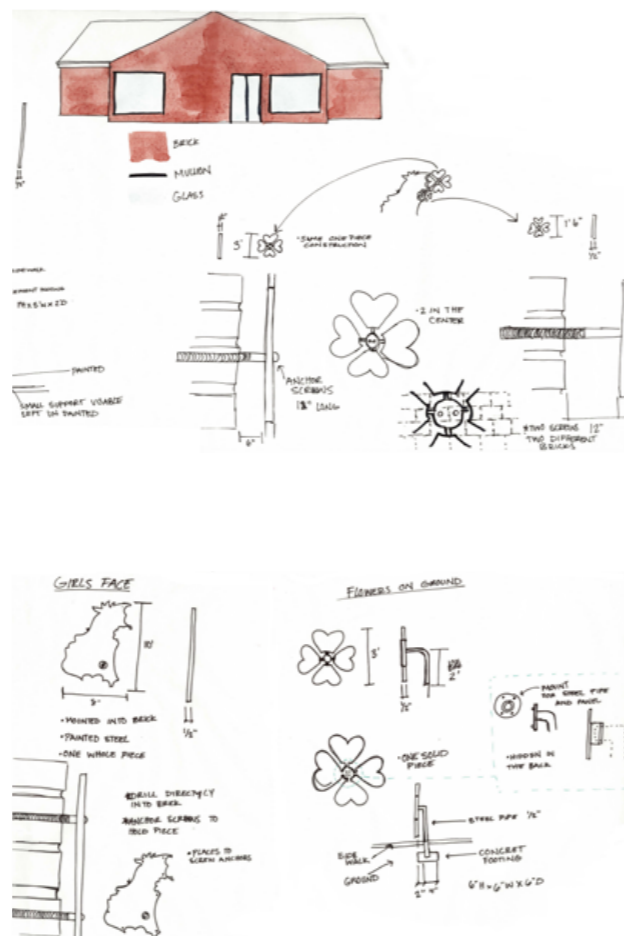
Year: 2016

Project: Paperty [IDES 301, Emily A. Smith]

After meeting the girls who participated in the program class, there was no question that they are highly intelligent and very inspiring. By conversing with them at a personal level, it became apparent that they were never given many chances to let their bright personalities shine.

The project conveys the concept of empowerment through an open space to let them share their talents and to celebrate each other. This is a space just for the girls, where they come and feel appreciated. The project is inspired by 1920 art deco, jazz era where art is free and the environment is very glamorous. An important consideration for the space is to help the girls learn practical skills they would need in their adult life. This can be done by getting them involved in this renovation, save money, how to start a business, and gain a craft. Inviting the girls in tours where they learn how to buy, flip, and resell furniture. Not only it can save the space a great amount of money, but more importantly, it teaches how to prioritize needs.

Exterior Signage

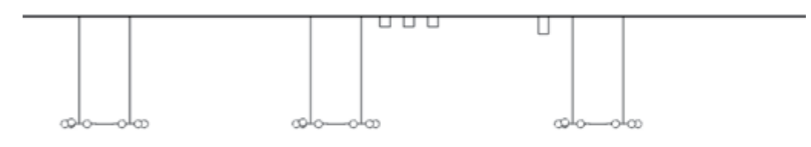


Branding

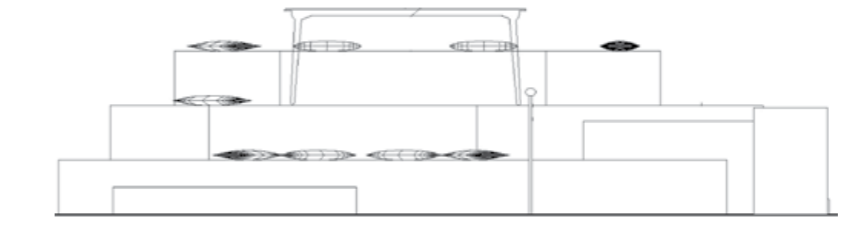




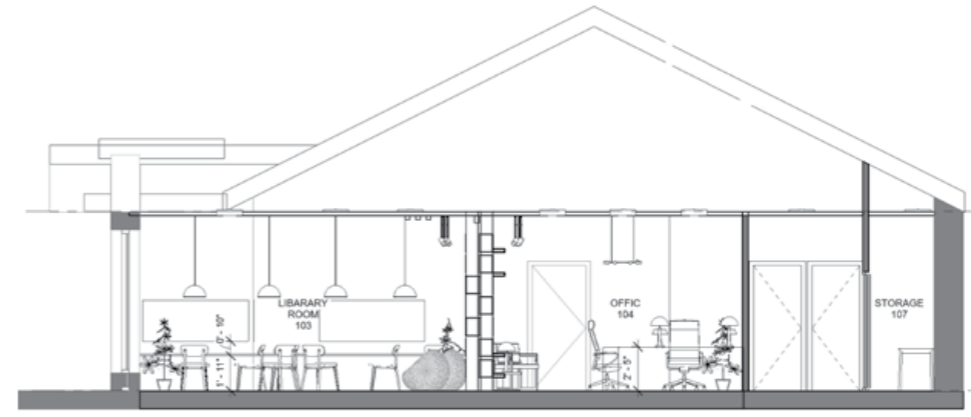
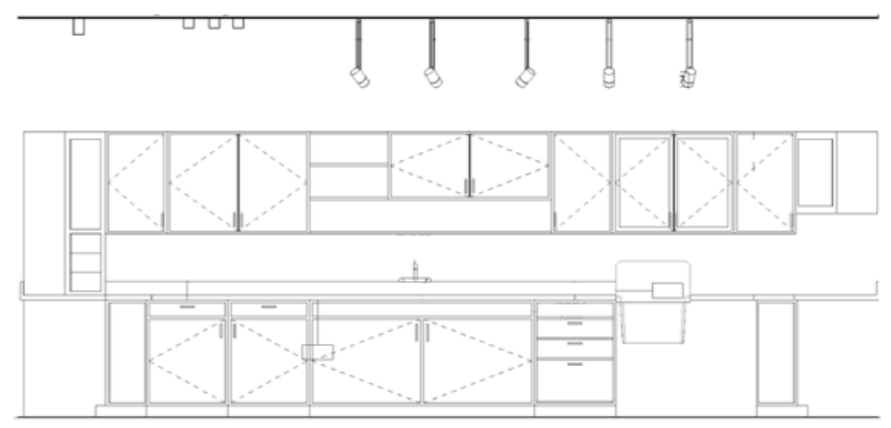
Finish Floor Plan



Stairs Seating



Kitchen



Section 1



Section 2

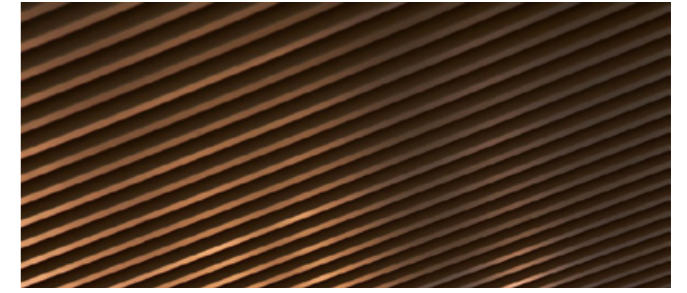


Dining/ Stage



Kitchen

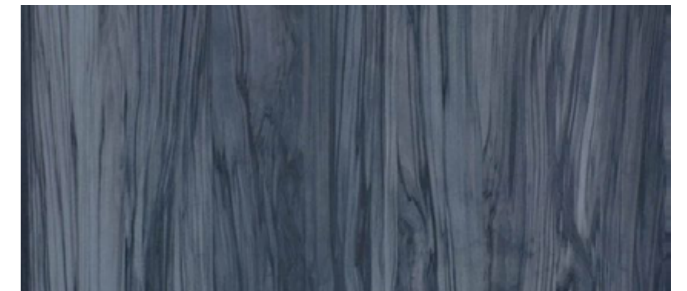
Ceiling: SAS International
SAS720
LINEAR CEILINGS



Wood: Elmwood
WHITE OAK
CLEAR OR UNFINISHED
SANDED SMOOTH



Casework Laminate: Formica
9203 NT



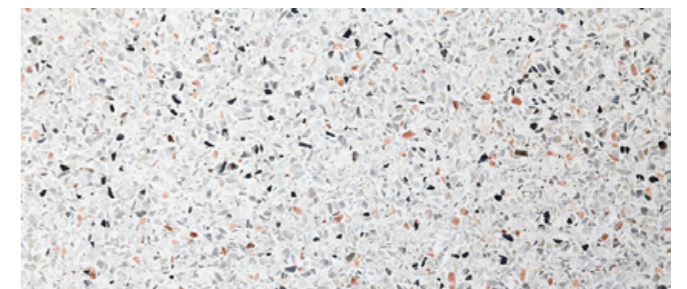
Ceramic Tile: Daltile
Sierra
1500 Rainier



Carpet: Patcraft 5K
MODULAR
Color Finish Line 00599



Terrazzo: Pompeii





Aster X Poltrona



Mill Console Table



BAC side chair



AURA Pendent



Kichler Armstrong



Gil Pendant

Glam Room and Office



