

What I learned ?
What I challenged myself ?

WORKS OVERVIEW



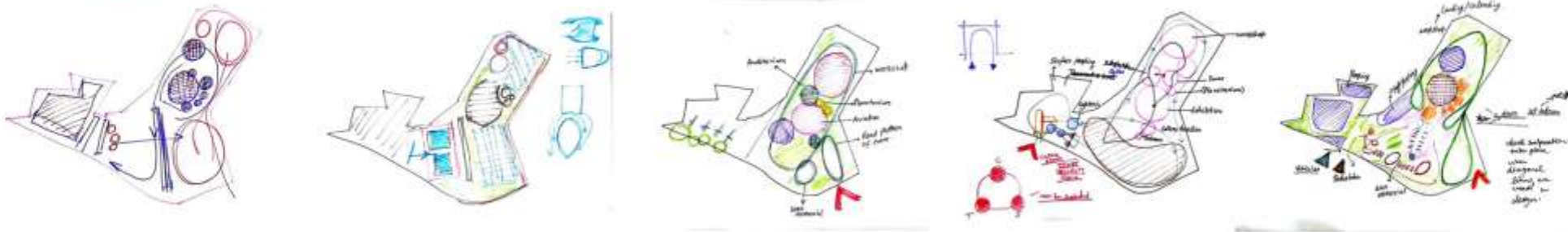
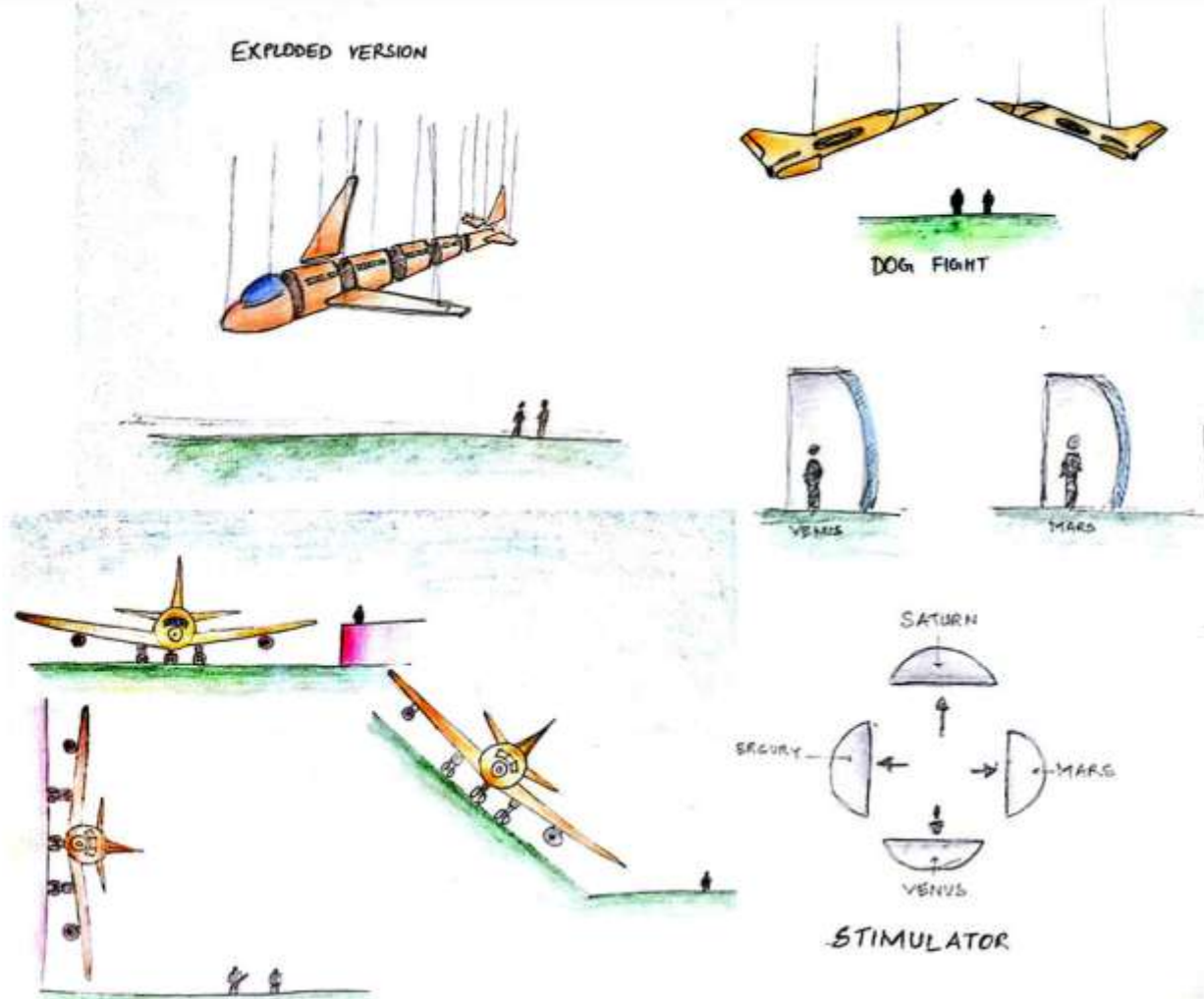
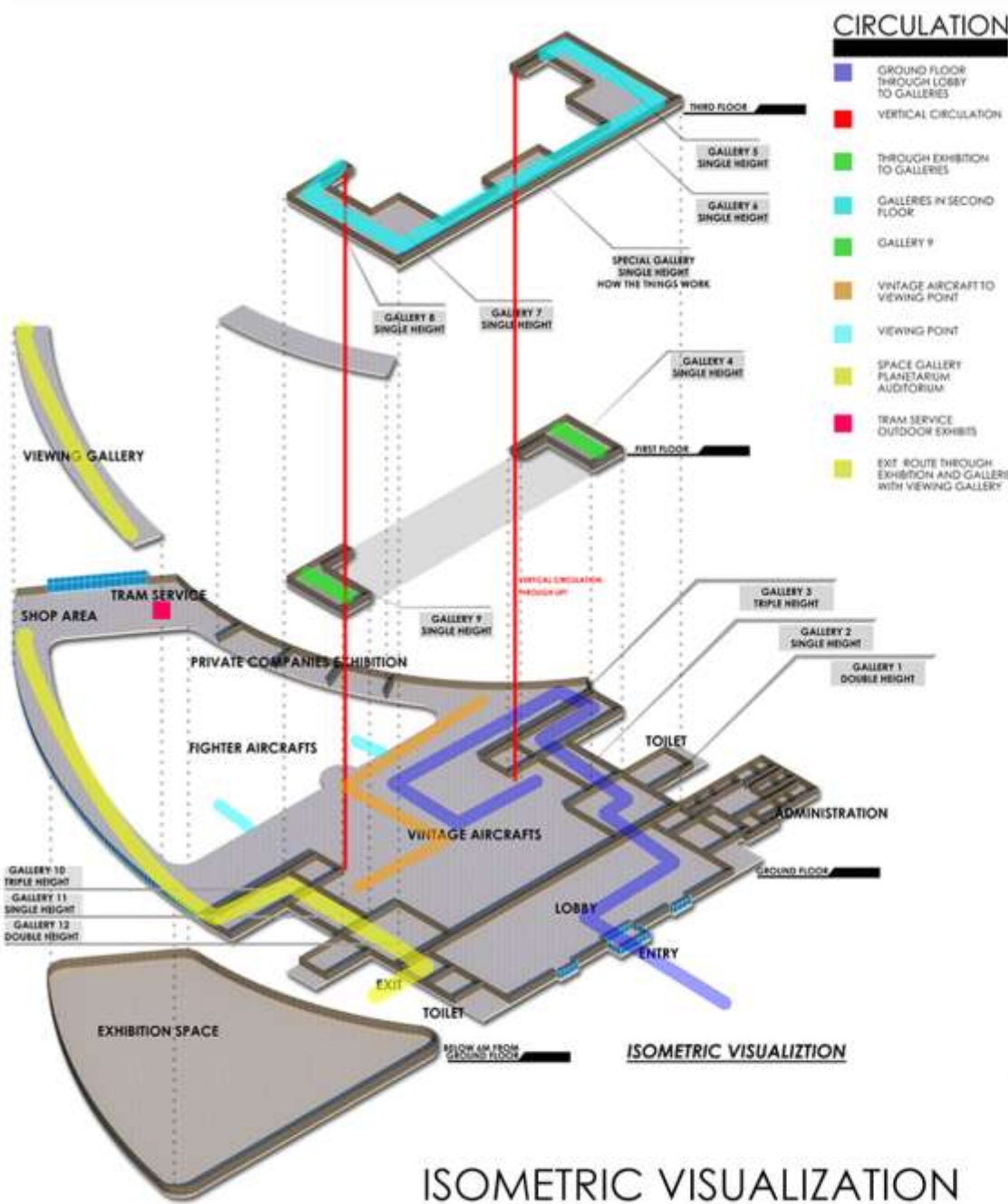
B.ARCH THESIS

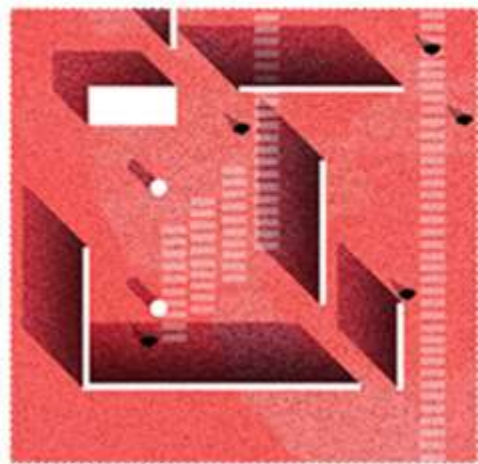
national aerospace museum complex
new delhi



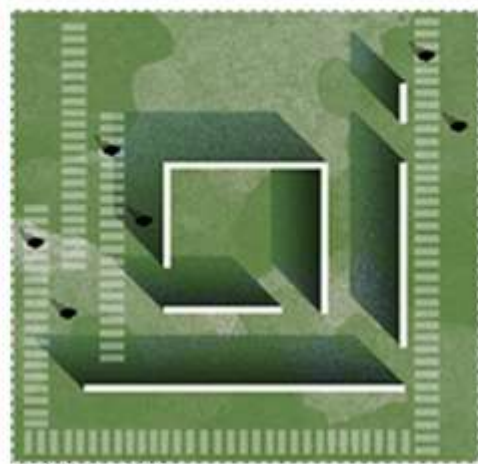
FRONT ELEVATION

BACK ELEVATION





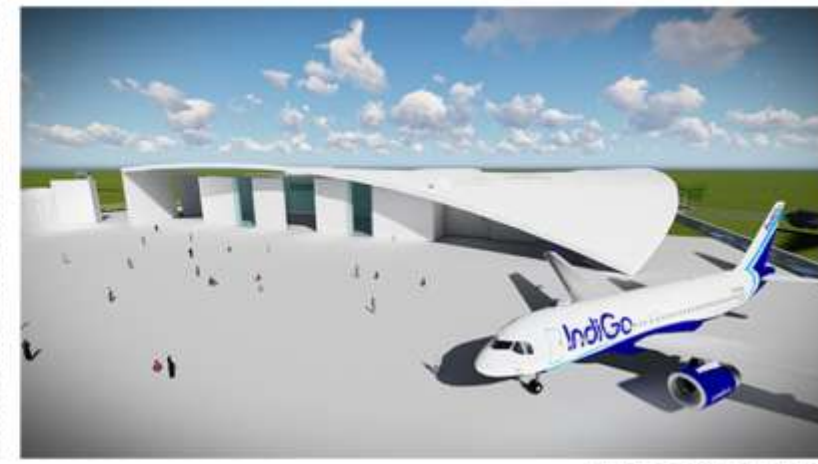
1965 GALLERY



1962 GALLERY



KARGIL WAR GALLERY



BIRD EYE VIEW



FUTURE OF IAF GALLERY



WORLD AVIATION & SPACE GALLERY



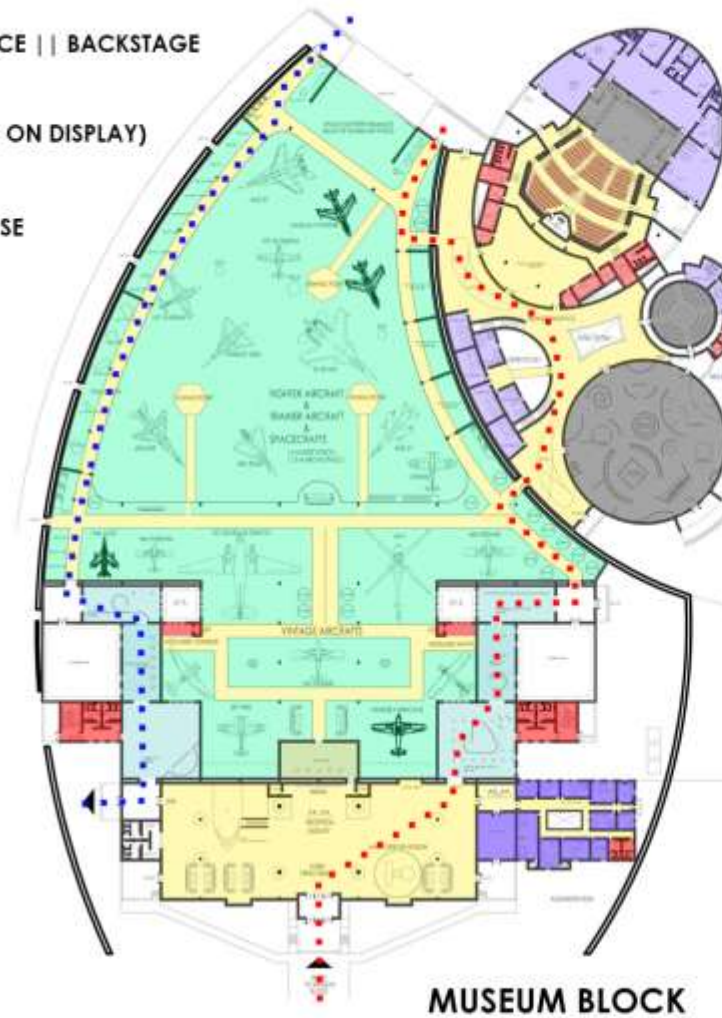
3D HOLOGRAPHIC GALLERY



ENTRANCE

- ADMISTRATION || INTERPRETATION SPACE || BACKSTAGE
- EXHIBITION SPACE (ACTUAL AIRCRAFTS ON DISPLAY)
- SRVICES || TOILETS || LIFTS || STAIRCASE
- LOBBY || CIRCULATION
- AUDITORIUM SEATING
- SPACE GALLERY
- THEORITICAL GALLERY

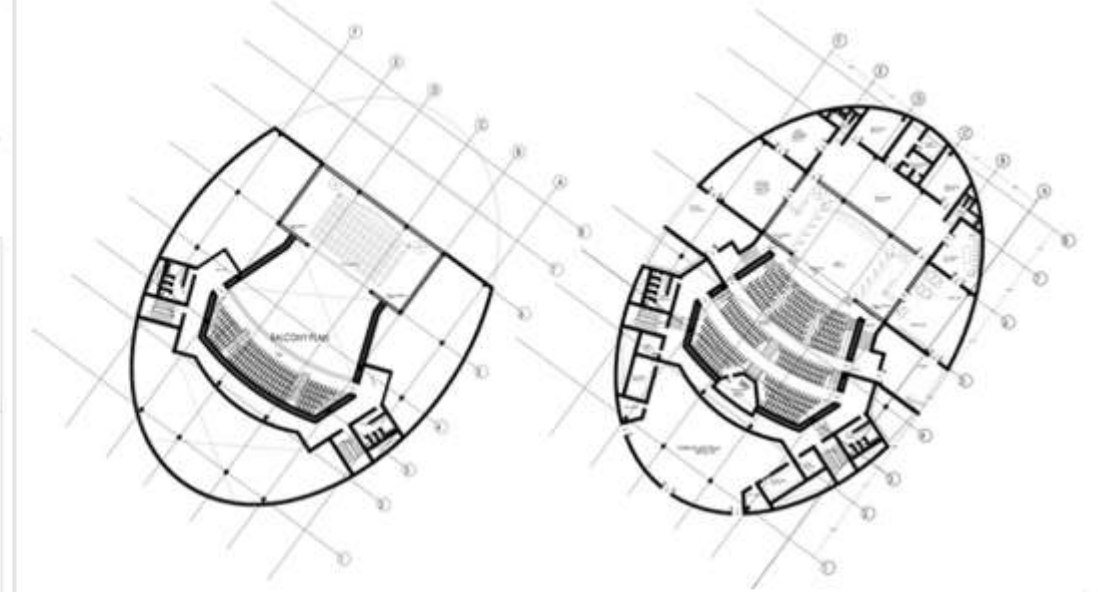
- ENTRY || EXIT
- ROUTE
- FASTEST ROUTE IS ALSO DERIVED IN THE THESIS



MUSEUM BLOCK

B.ARCH THESIS

national aerospace museum complex
new delhi



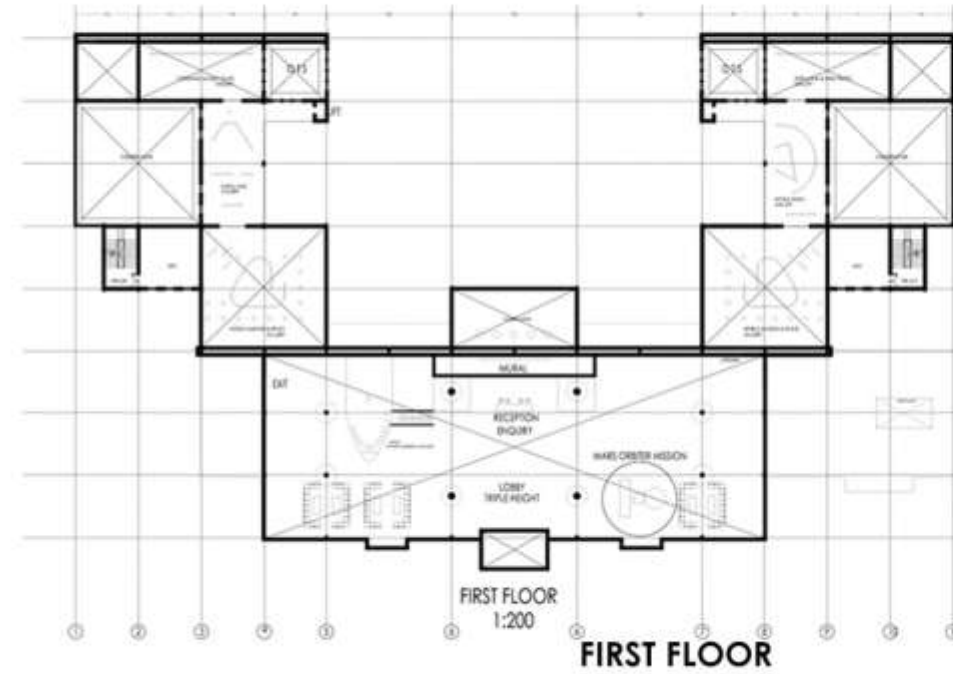
AUDITORIUM



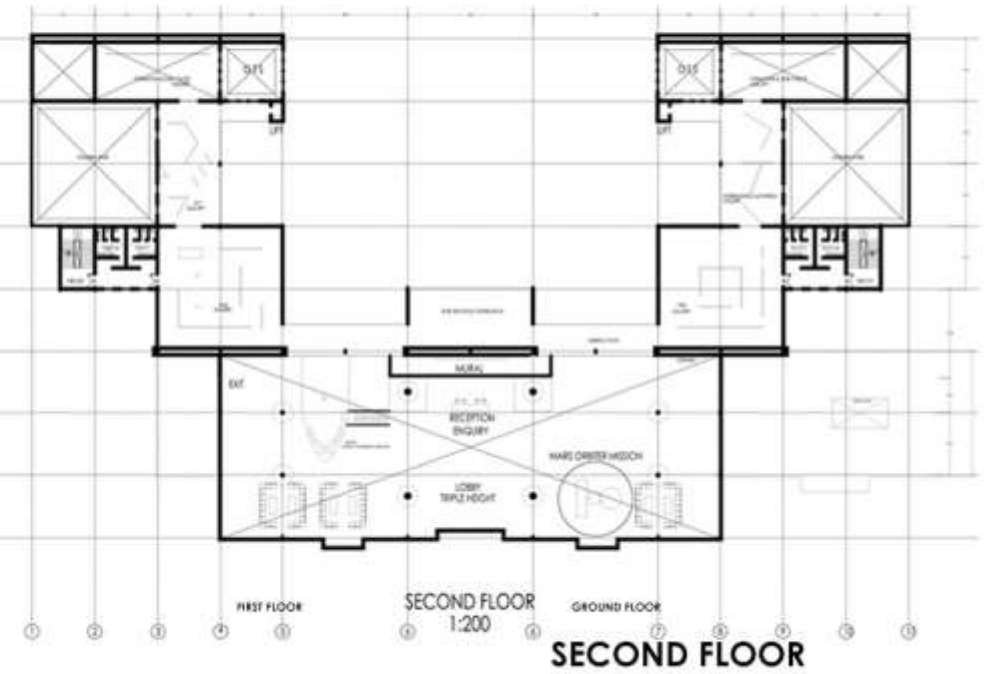
LOBBY INTERIOR



GROUND FLOOR



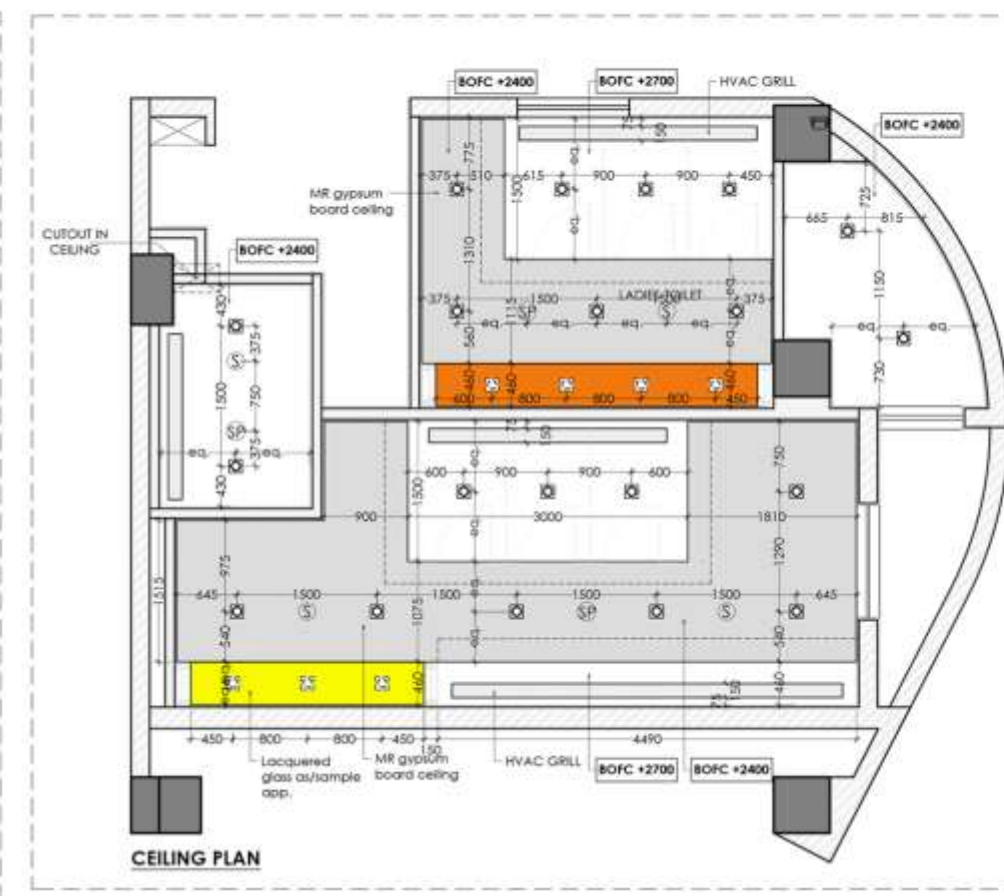
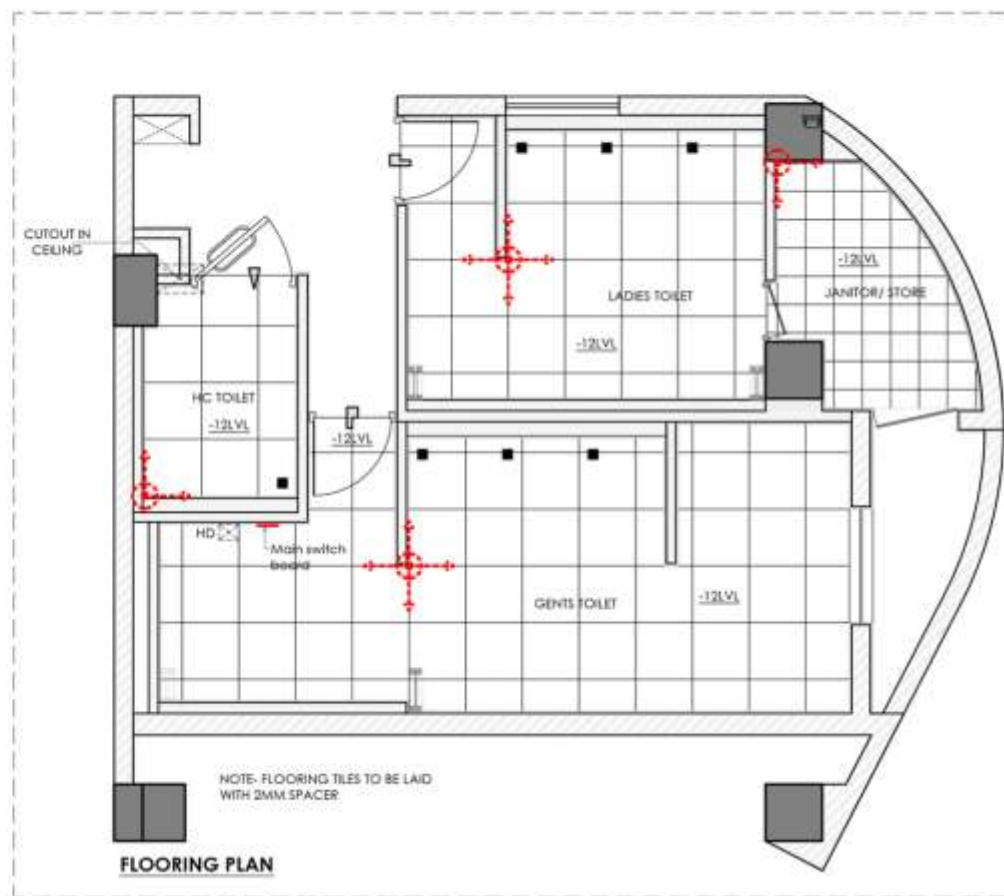
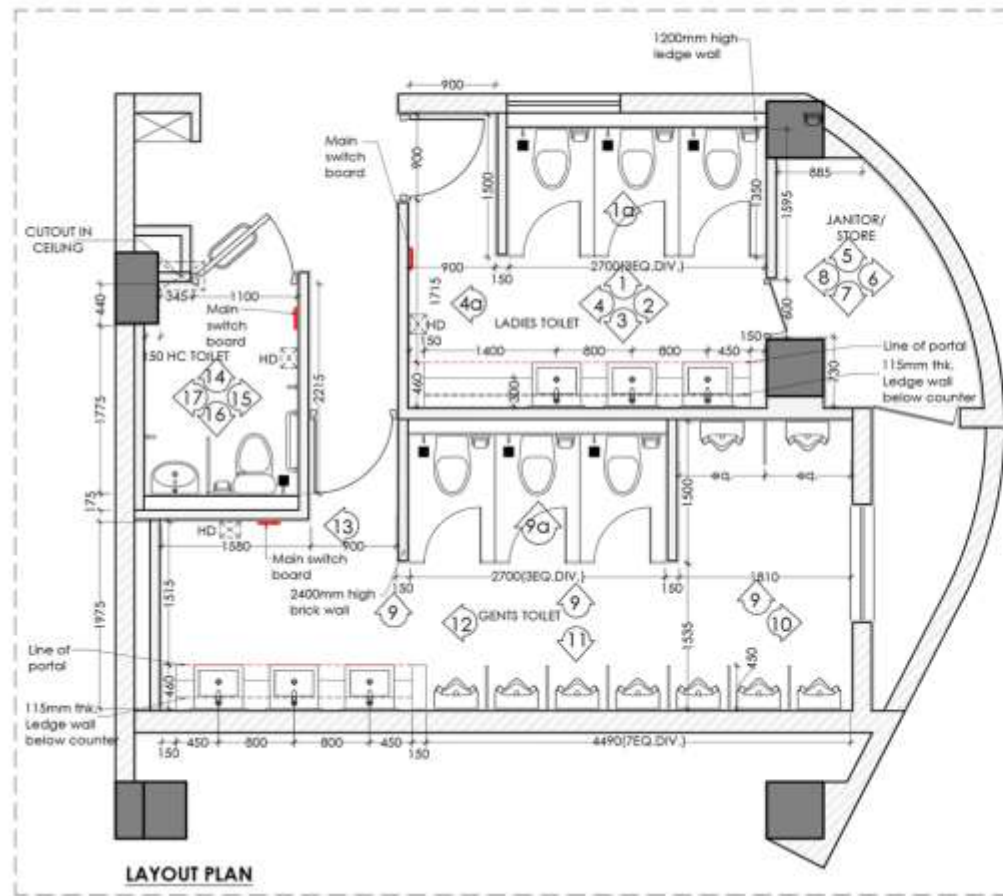
FIRST FLOOR



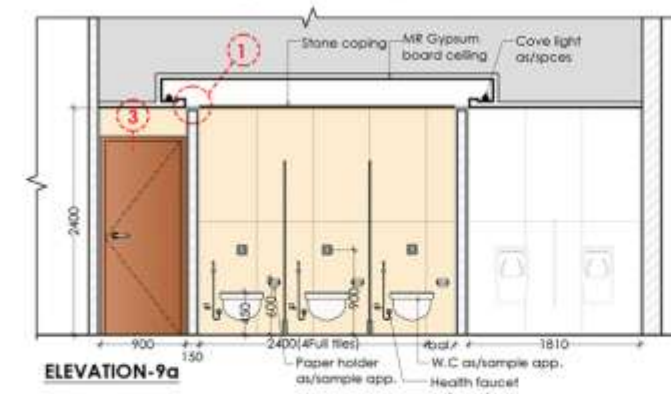
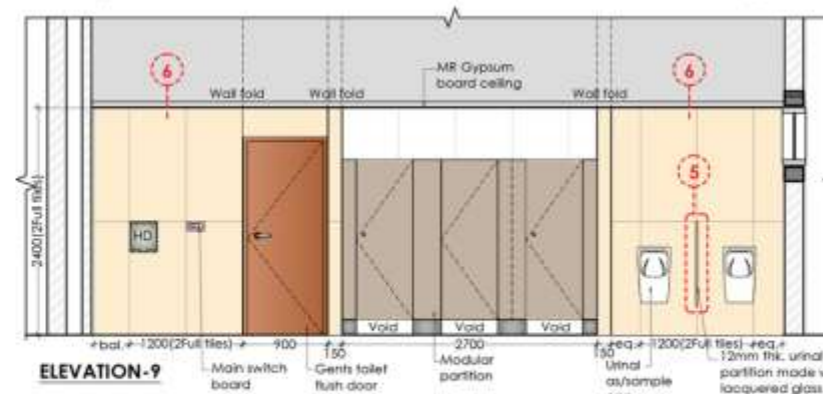
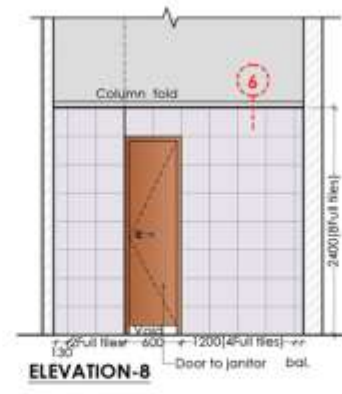
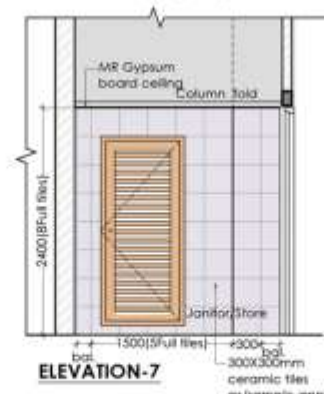
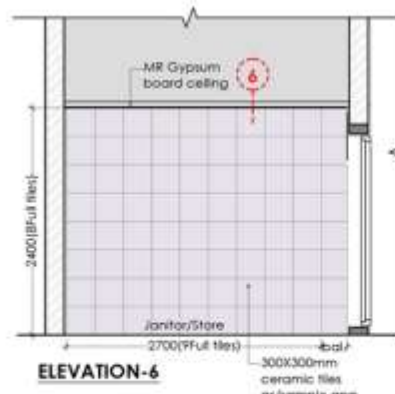
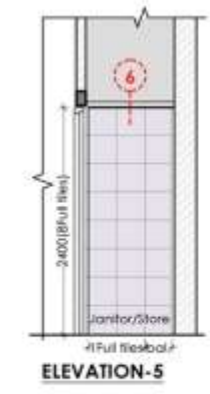
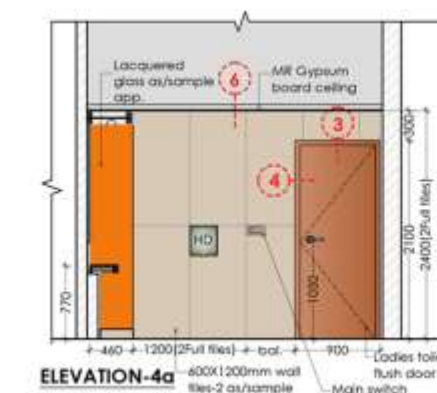
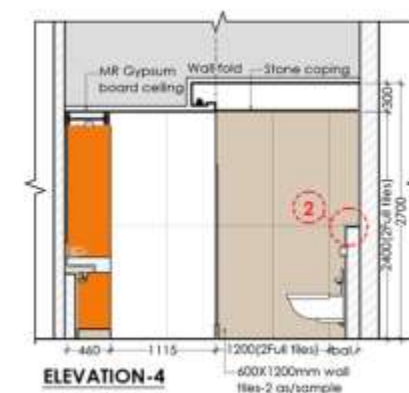
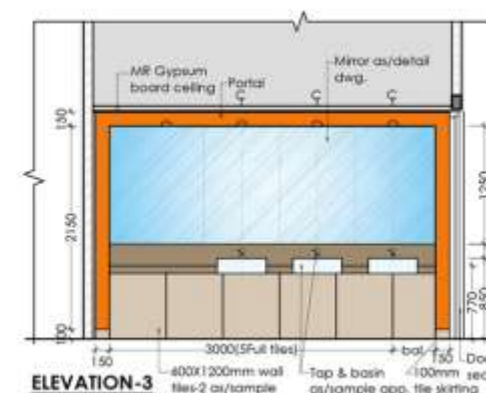
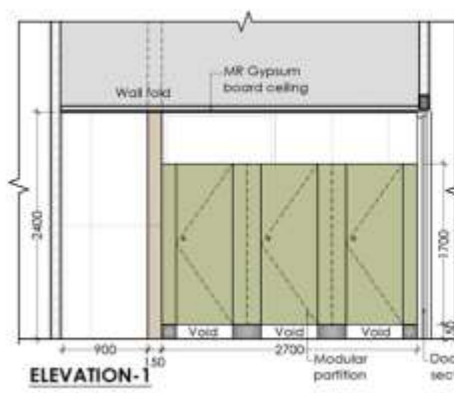
SECOND FLOOR

TRAINING (5TH YR)

sikka associates architects | new delhi



1. Work on the signages and building part elevations of an commercial project.
2. Interior designing of Toilets.
3. Co-ordinating the services layouts for basement.
4. Tender drawings for housing project.
5. Staircase detailing.
6. Documentations work.



CEILING LEGEND

	Light fixture-1 as/specs.
	Tilable focus light fixture as/sample app.
	Smoke detector
	Speaker
	HVAC Grill
	MR Gypsum board ceiling +2700mm
	MR Gypsum board ceiling +2400mm

WALL LEGEND

	AAC Block
	Brick wall
	Ledge wall
	2400mm high brick wall

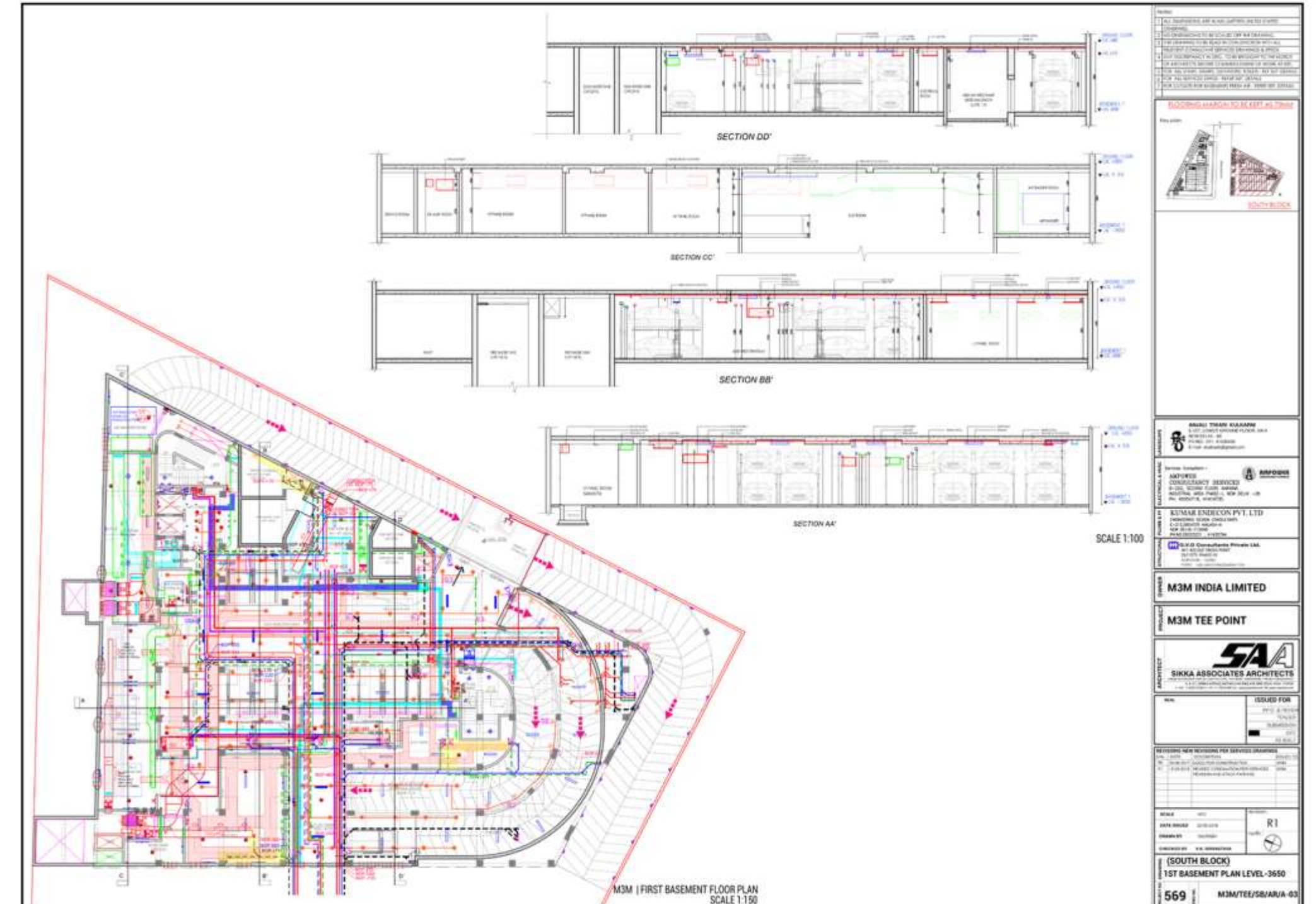
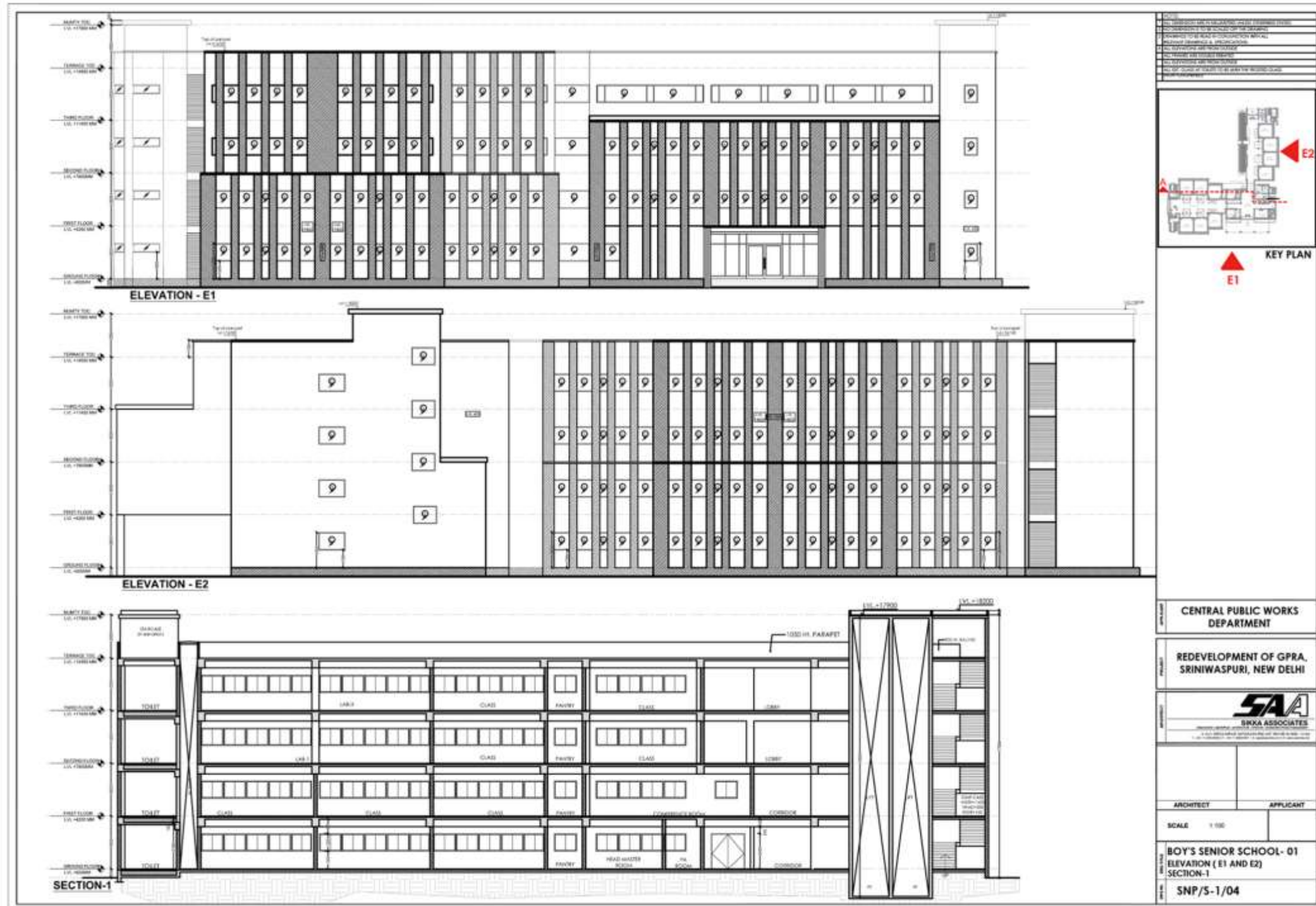
FLOORING LEGEND

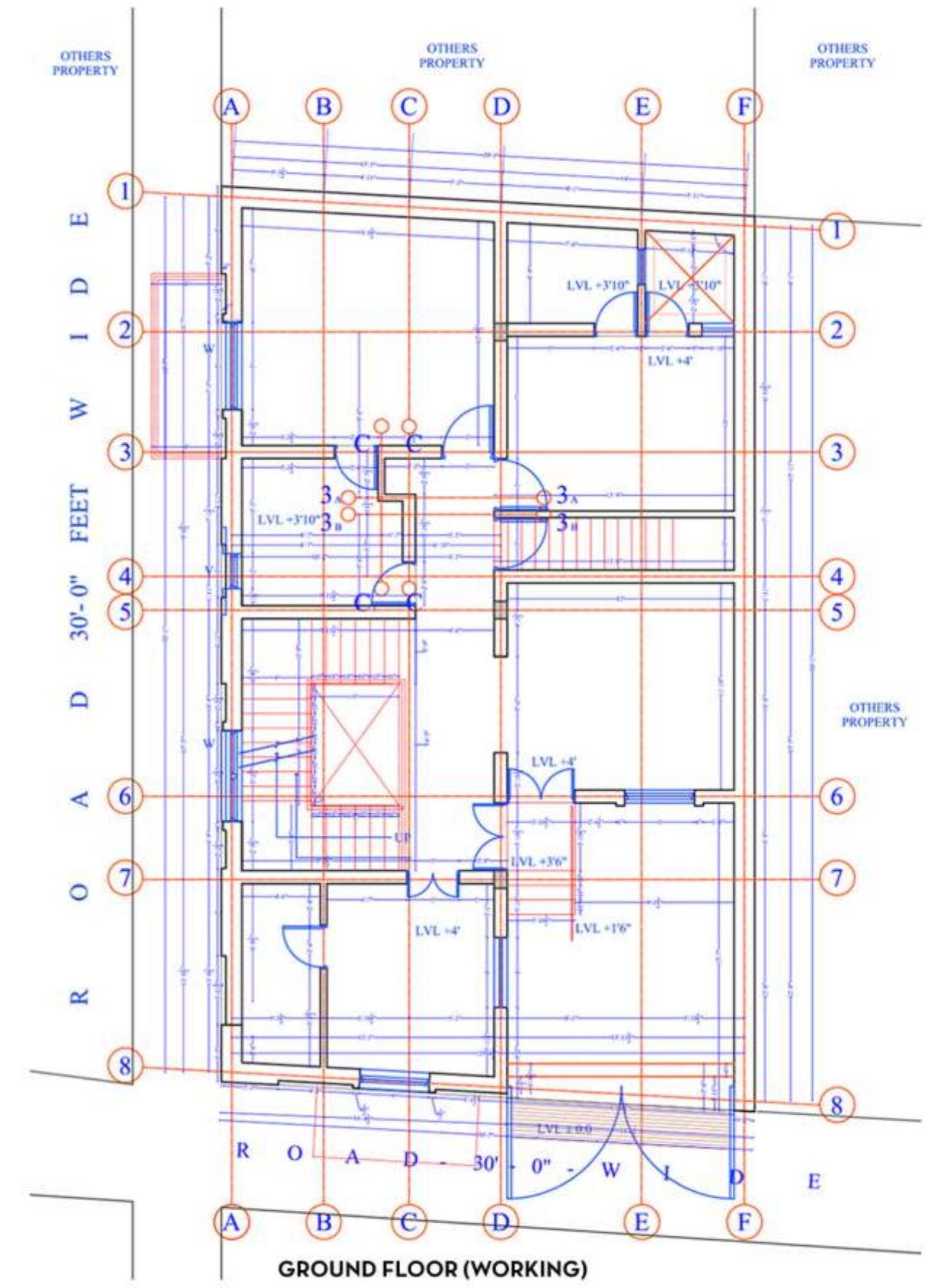
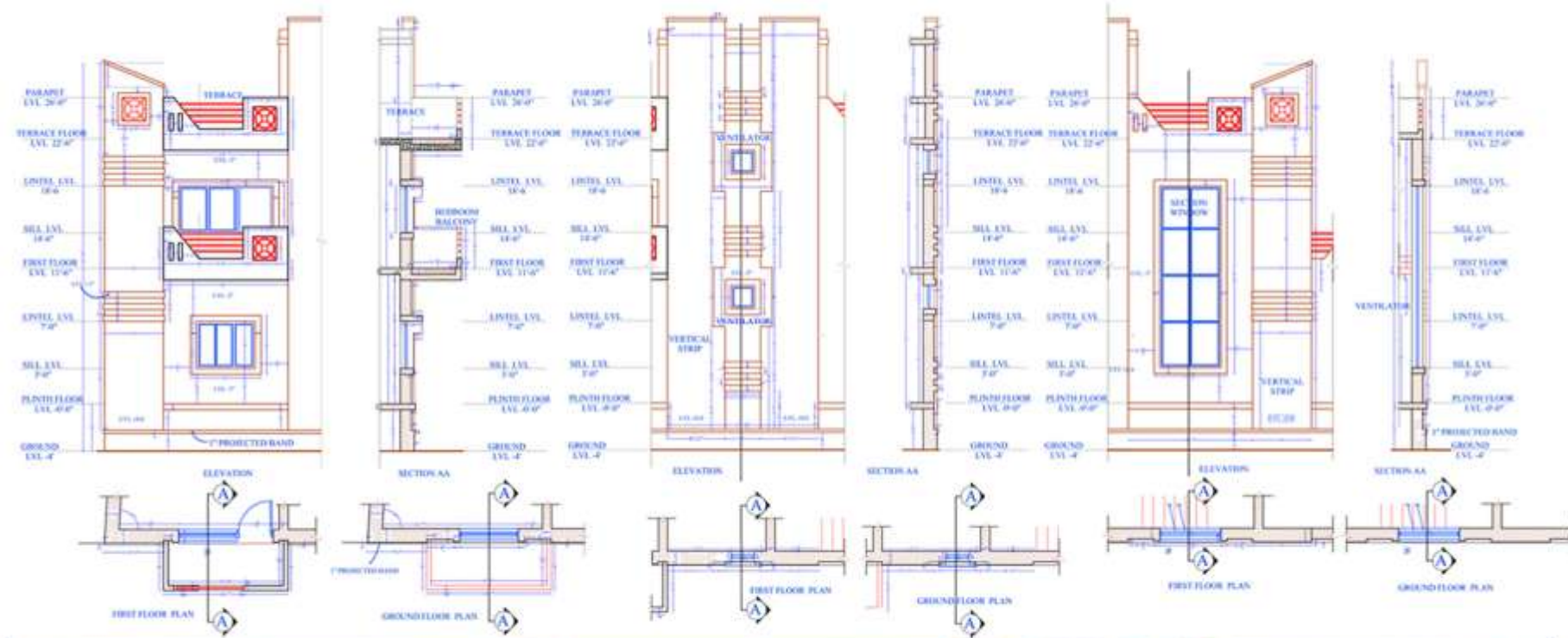
	600x600 Tiles as/sample app.
	300x300 Tiles as/sample app.
	STARTING POINT OF TILE

FINISHING LEGEND

	600x1200mm Wall tile-1 as/sample app. (for gents & special abled toilet)
	600x1200mm Wall tile-2 as/sample app. (for ladies toilet)
	SS brushed finish modular partition legs
	Laminate as/sample app.
	Compact laminate-1 as/sample app. (for gents toilet)
	Compact laminate-2 as/sample app. (for ladies toilet)
	Mirror as/sample app.
	Granite as/sample app.
	Lacquered glass-1 as/sample app. (for ladies toilet)
	Lacquered glass-2 as/sample app. (for gents toilet)
	Ceramic tiles as/sample app. (300x300mm)

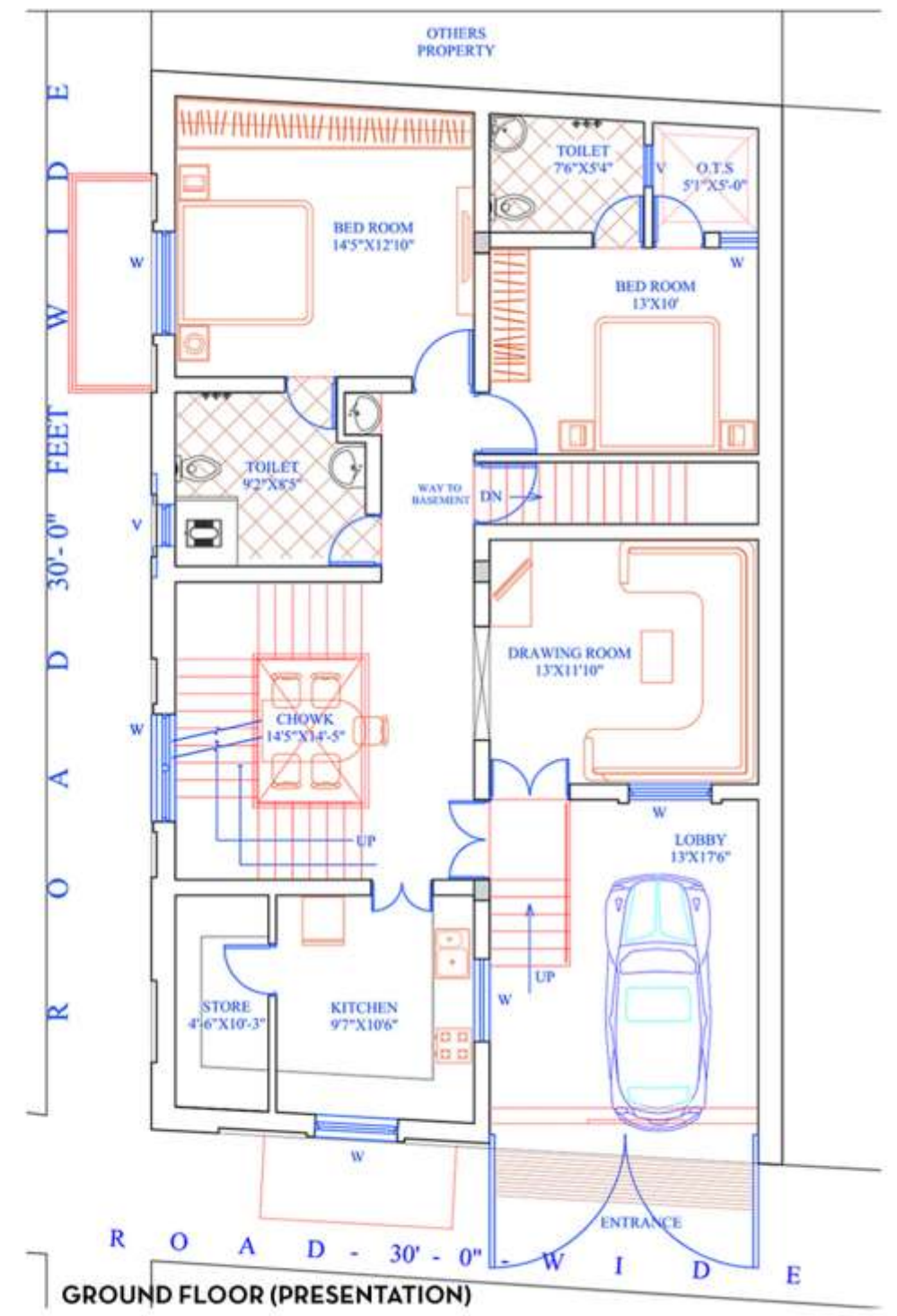
not all drawings are covered in this portfolio





TRAINING (3RD YR)

prakash b. azad & associates | jodhpur



CLASS PROJECTS

residential house



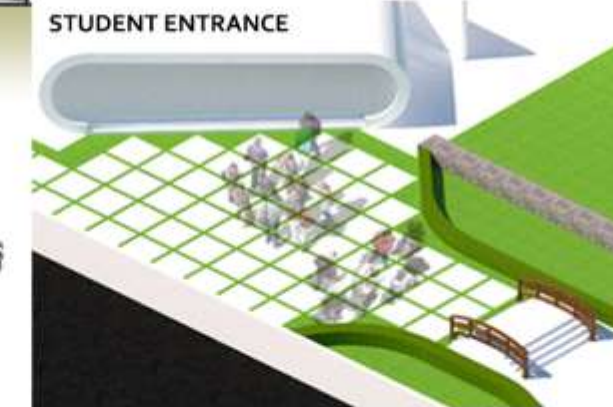
CLASS PROJECTS

architecture college

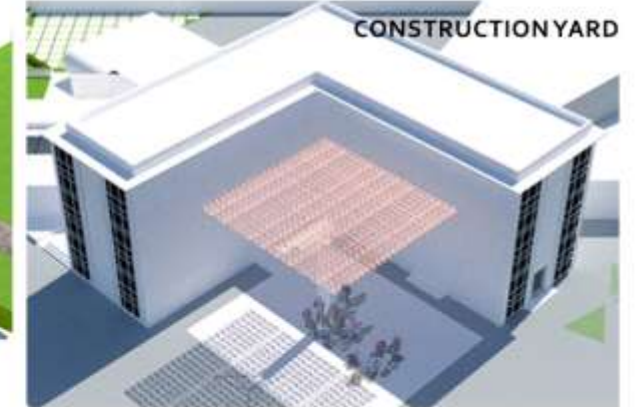


Back elevation

Front elevation

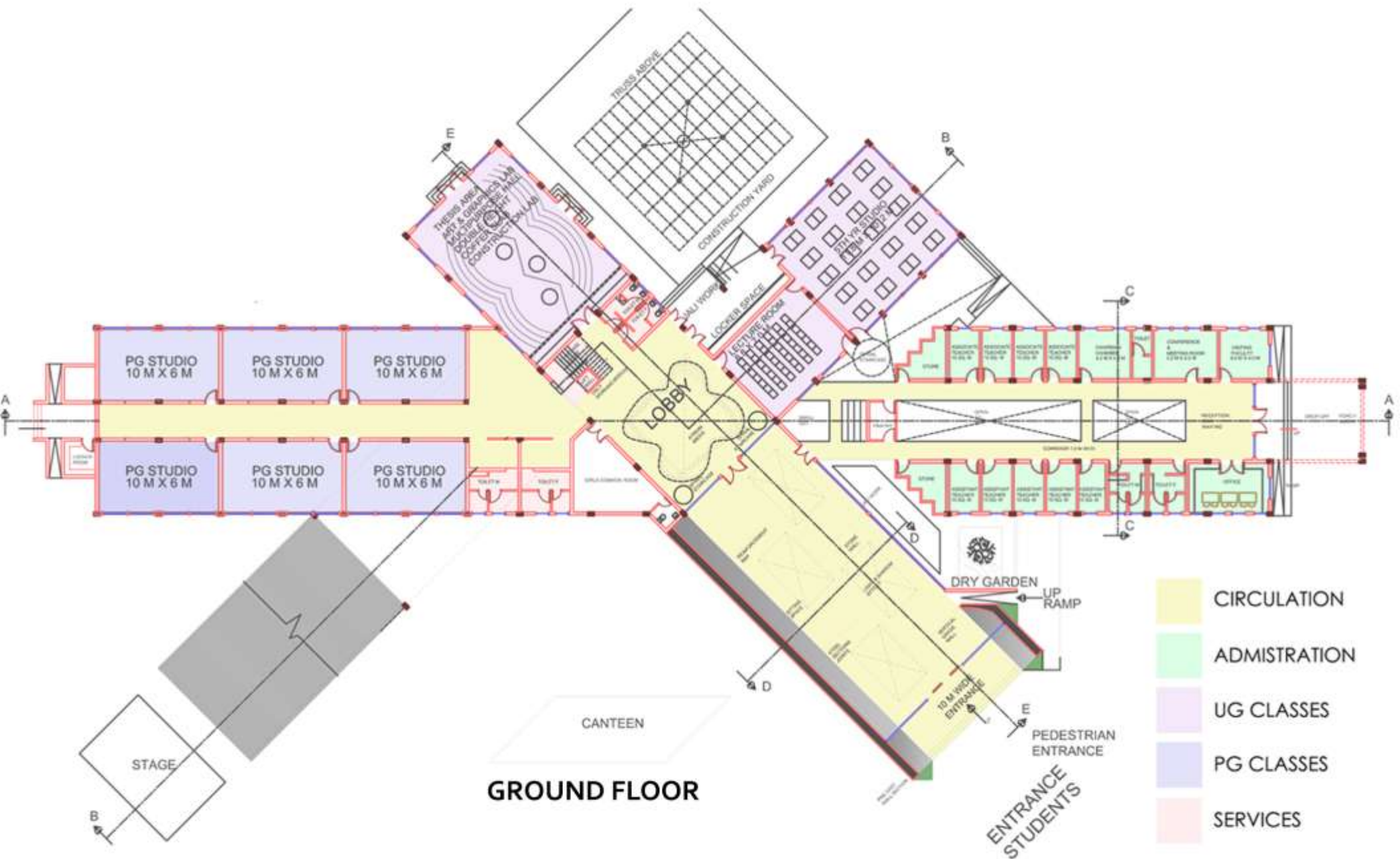


STUDENT ENTRANCE



CONSTRUCTION YARD

ENTRANCE OF STAFF AND STUDENT IS SEPARATED FROM ACHIEVED DESIGN PROCESS AND HENCE IS IN WORKING CONDITION. SPACES ARE CREATED IN SUCH A WAY THAT ALL THE CLASS EXCEPT 3RD YEAR STUDIO ARE PUT IN VERTICAL DIRECTION AND 3RD YEAR STUDIO IS PUT IN THE OPEN, NATURAL ENVIRONMENT IN OPPOSITE DIRECTION AREA AND SPACES OF 3RD YEAR STUDIO IS CREATED IN SUCH A MANNER THAT IT EMPHASIS ON OVERALL DESIGN CONCEPT. THE WHOLE DESIGN IS EMPASISE ON 3RD YEAR STUDIO BECAUSE OF MORE WORK LOAD. SO I GIVE A OPEN AND NATURAL TOUCHING ENVIRONMENT TO IT



GROUND FLOOR

- CIRCULATION
- ADMISTRATION
- UG CLASSES
- PG CLASSES
- SERVICES



First floor plan



Second floor plan



Third floor plan



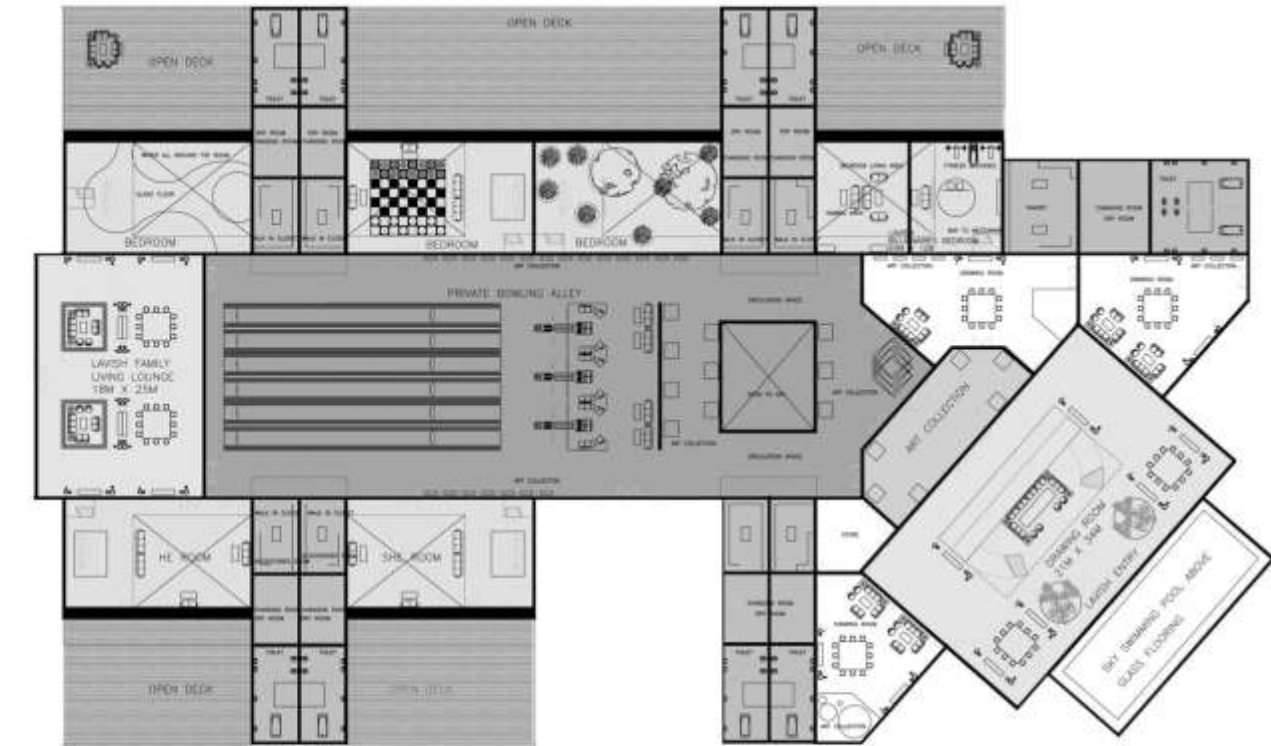
BACK VIEW



ADMINISTRATION

CLASS PROJECTS

billionair house



PLAN

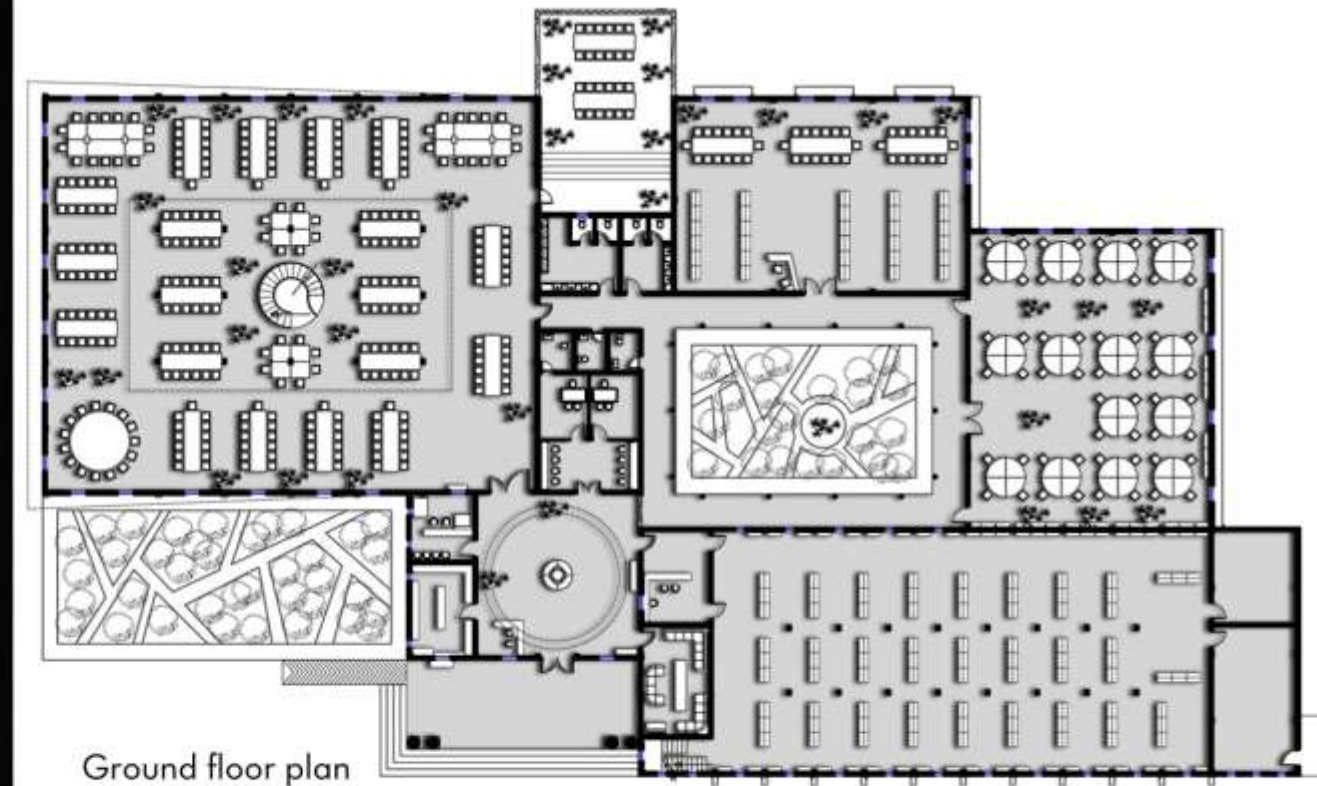


SECTION

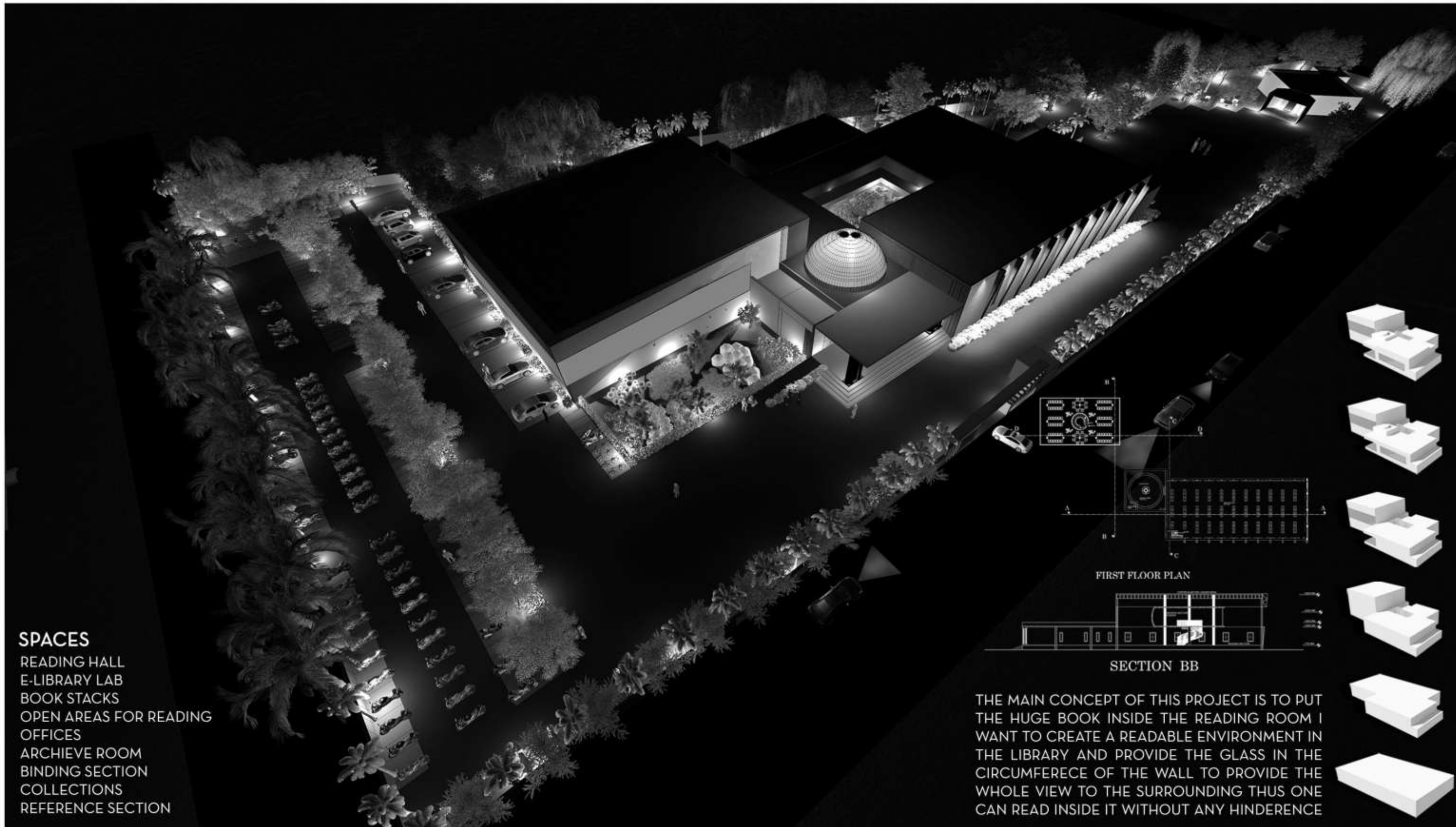
- LUXURIOUS TOILET
- ART COLLECTION SPACE
- LAVISH ENTRANCE | DRAWING ROOM
- BEDROOMS
- OPEN DECK
- LAVISH FAMILY LIVING LOUNGE
- PRIVATE BOWLING ALLEY

CLASS PROJECTS

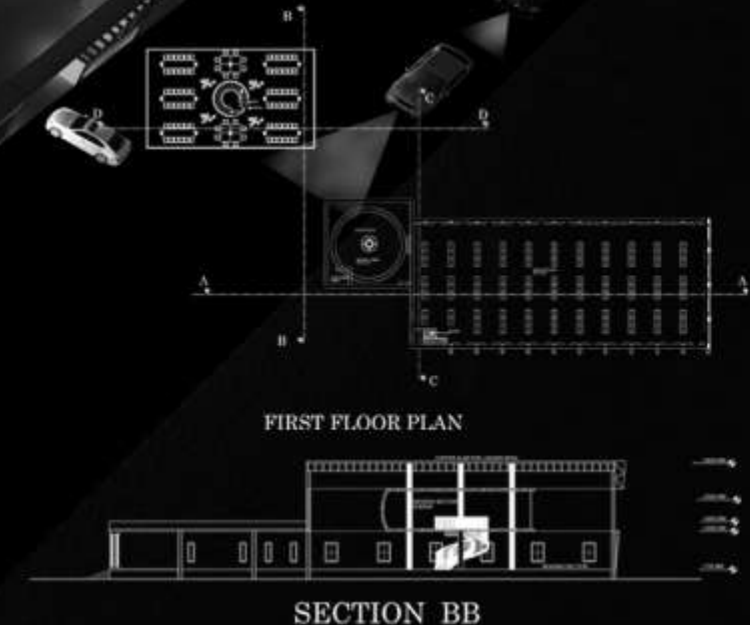
engineering library



Ground floor plan



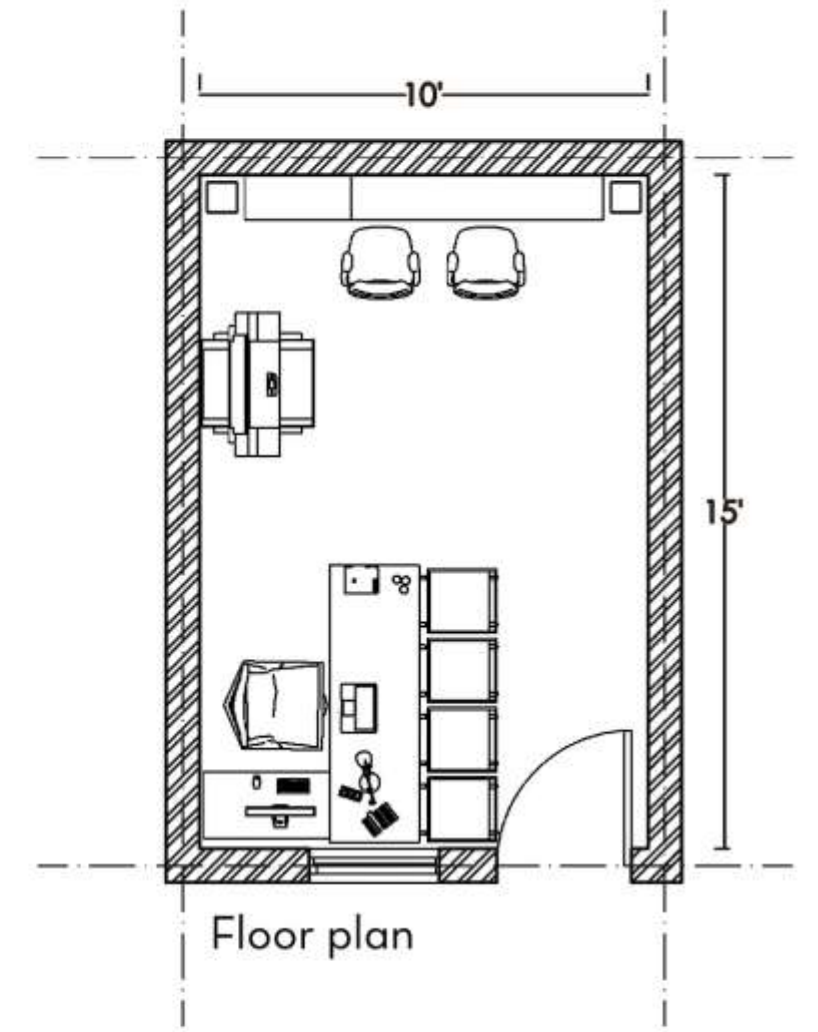
- SPACES**
- READING HALL
 - E-LIBRARY LAB
 - BOOK STACKS
 - OPEN AREAS FOR READING
 - OFFICES
 - ARCHIVE ROOM
 - BINDING SECTION
 - COLLECTIONS
 - REFERENCE SECTION

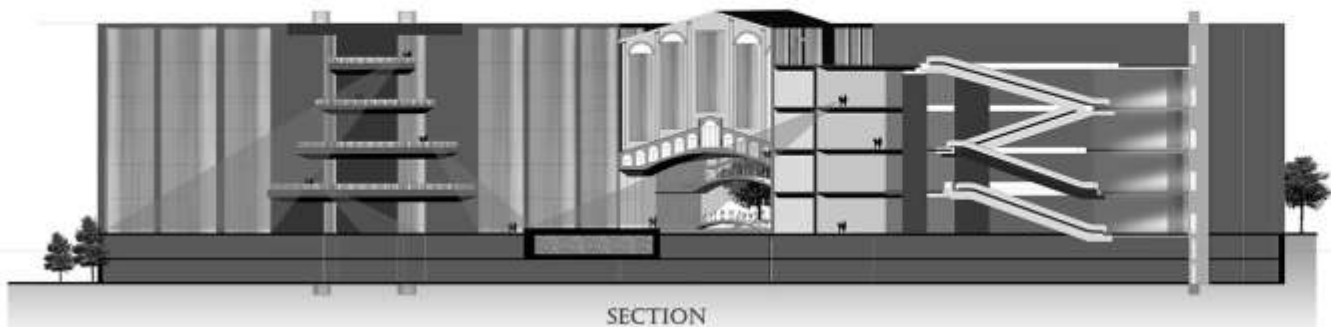


THE MAIN CONCEPT OF THIS PROJECT IS TO PUT THE HUGE BOOK INSIDE THE READING ROOM I WANT TO CREATE A READABLE ENVIRONMENT IN THE LIBRARY AND PROVIDE THE GLASS IN THE CIRCUMFERECE OF THE WALL TO PROVIDE THE WHOLE VIEW TO THE SURROUNDING THUS ONE CAN READ INSIDE IT WITHOUT ANY HINDERENCE

CLASS PROJECTS

architect office





SECTION

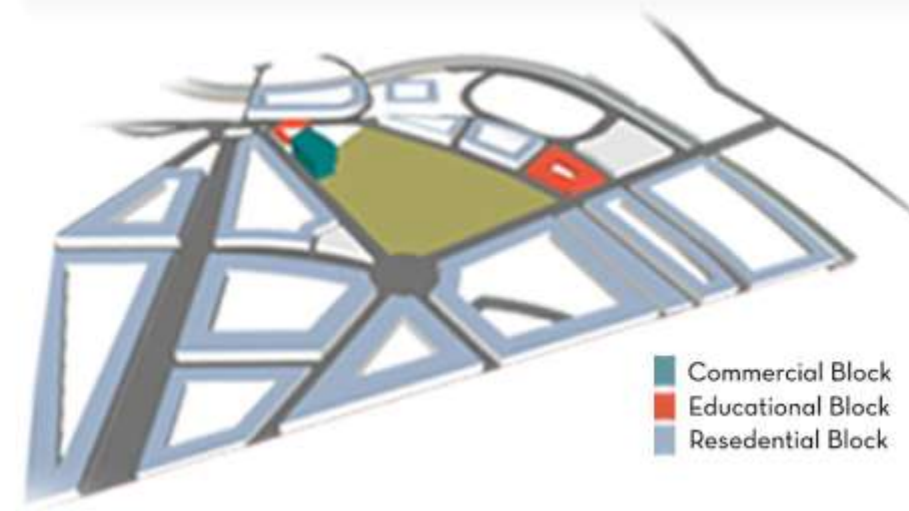
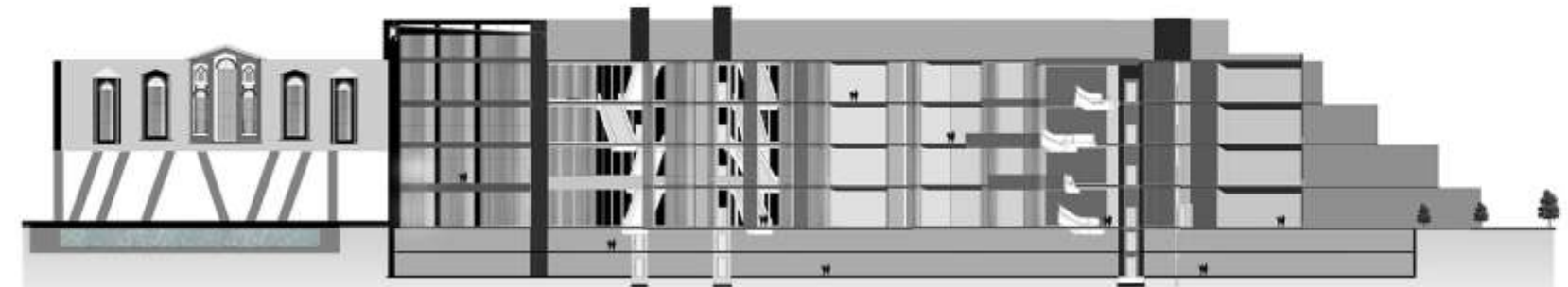
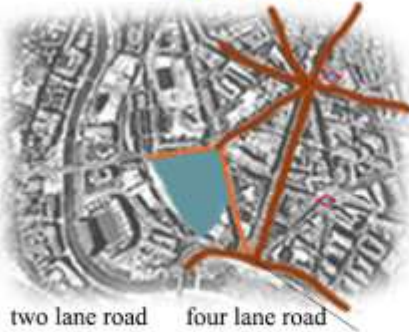
CULTURE

WHY MADRID

As the 20th century rolled along, more shopping centers came up in response to consumers' demands. Shopping centers expanded, and architects experimented with a variety of styles and movements, signifying the importance of refraining from a mundane and monotonous retail affair. Today's trends urge the need to address contemporary social desires in order to create a new generation of the shopping center and leisure facilities. VASCILATE looks to integrate the shopping areas with entertainment and leisure zones by "vascillating" between both external and internal spaces in an innovative and efficient manner, catering to a much wider audience. The contours were carefully extracted and the service entrances were placed accordingly to ease the access.



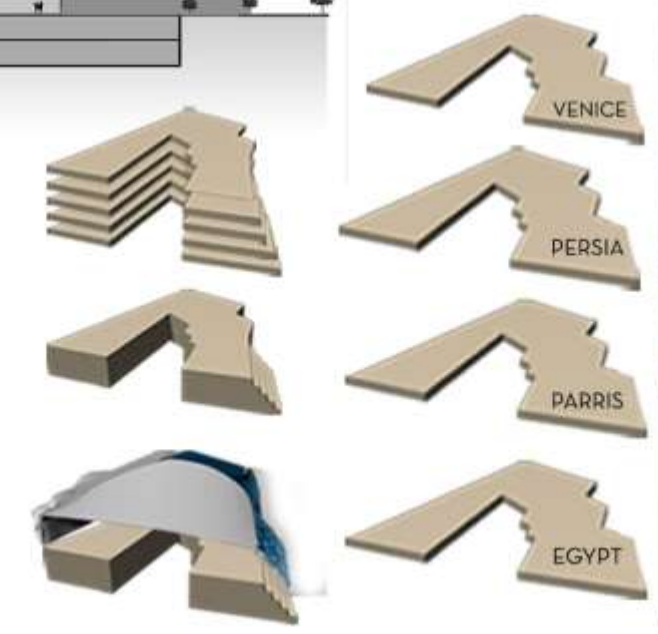
nearby main junction connecting the whole city



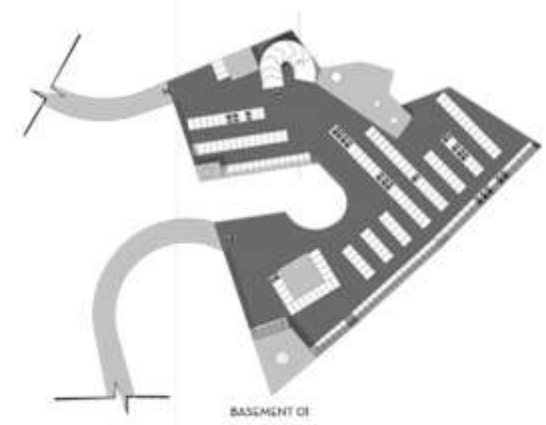
Commercial Block
Educational Block
Residential Block

A main pedestrian entry is provided which leads to a double basement planned according to the contours. Most of the curves were chamfered and filled in while the rest virgin contours are remained as it is. The contours were carefully extracted and the service entrances were placed accordingly to ease the access.

SITE



Madrid is a city of exuberance, entwined with a rich culture and deep tradition. VACILLATE looks to enhance these aspects with flexibility, voyeurism, and leisure facilities. The social concept evolves through the idea of bringing together social sustainability and desires and emerging economic potentials all carefully placed to create a new generation of the shopping center. To bring closer all experiences under one space, the plan evolved into that of a hand holding together a wide scope of activities within. An exterior envelope covers the entire building merging with the green spaces on one side while transitioning into an offset of a layer on the others. These layers symbolize the fingers in a hand in a modern approach making it seem like a closed hand. A four-story building, the shopping experience provided is individually unique in every area. The floors are divided into zones of the SPECIFIC ethnicity of different countries, symbolizing the architecture and tradition of those areas. This was evolved from the concept of bringing a wide spectrum of culture along with entertainment catering to all genre alike. The four floors hence bring us to Venice, Persia, Paris, and Egypt.



BASMENT 01

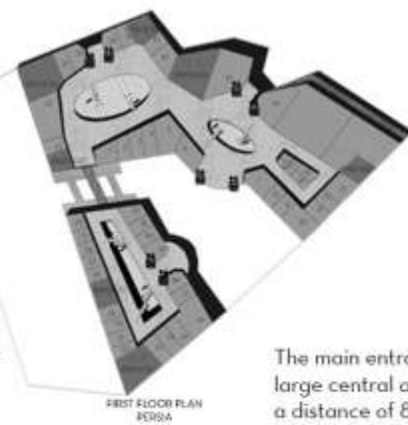


BASMENT 02



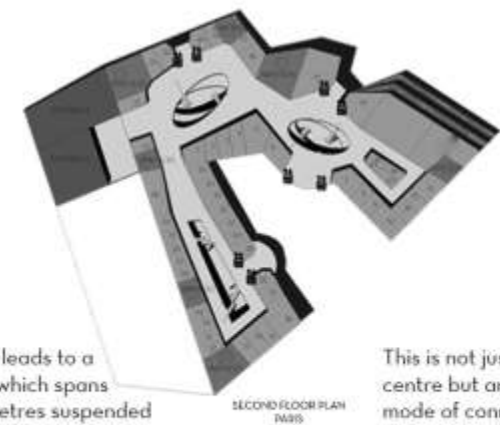
GROUND FLOOR PLAN VENICE

A central space is reserved for Spain's night life which bring forth the leisure the Spanish youth seeks.



FIRST FLOOR PLAN PERSIA

The main entrance leads to a large central area which spans a distance of 80 metres suspended on a truss structure.



SECOND FLOOR PLAN PARIS

This is not just a shopping centre but an impeccable mode of connecting spaces, areas and cultures all under one roof.



THIRD FLOOR PLAN EGYPT

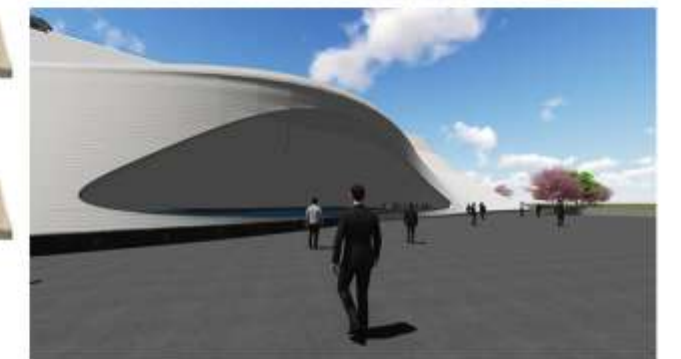


FOURTH FLOOR PLAN FOOD

COMPETITION

mall concept design

archdaily



PHOTOGRAPHY
my amateur photos



MODEL MAKING

sharp edges maker





Archi-Fied (derived from the word Architecture Simplified) was founded in June 2008 as a resource blog dedicated to providing information and knowledge to the growing community of architecture, interior design, planning and landscape students and all aspiring architects, designers and planners.

Role : BLOG WRITER

Articles : 2 articles on board

“an architect diary”



Founded in 2006, World Architecture Community provides a unique environment for architects, academics and students around the Globe to meet, share and compete.

Role : COUNTRY REPORTER

Articles: yet to come



GoUNESCO is a citizen led umbrella of initiatives that makes heritage more engaging. The designations employed and the presentation of material throughout this website do not imply the expression of any opinion whatsoever on the part of UNESCO concerning the legal status of any country, territory, city or area or of its authorities, or concerning the delimitation of its frontiers or boundaries.

Role : INTERN

Articles: 7 Articles on board



BLOG | WRITINGS

i am understanding my shadaw



Medium

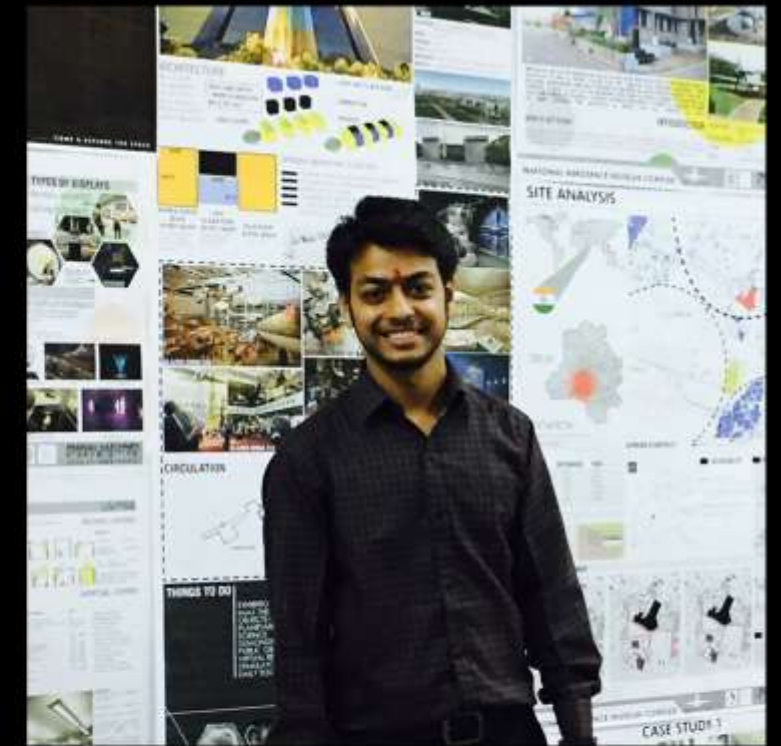


Archinect

Personal writings is available on these platforms otherwise in my diary and some articles are shared with the architecture firms like:



CONTACT
hire me!



P R A N A V V A R S H N E Y

e
p19varshney@gmail.com

p
+919808821439

a
14 | Ram sanehi dham colony
G.t.road Aligarh | India

DEPARTMENT OF ARCHITECTURE
ALIGARH MUSLIM UNIVERSITY